

Primary Roll by Year Group & Total % Percentage Capacity Full: January 2023 (2022/23)

Appendix B: Table 1

PA	School Name	PAN	National Curriculum Year Group						Total Roll	
			R	1	2	3	4	5		6
Planning Area 1	Christ Church Hampstead NW3	28	28	26	28	27	27	28	28	192
	Emmanuel	30	29	30	30	29	29	30	27	204
	Fitzjohn's	30	30	30	29	30	30	29	28	206
	Hampstead Parochial (1FE Y6)	30	30	31	29	29	30	29	26	204
	Kingsgate (2FE Y6)	90	90	87	83	88	85	78	87	598
	New End	60	29	52	49	45	43	50	48	316
	St Eugene de Mazenod	30	30	30	29	29	28	24	28	198
	St Luke's Free School	15	15	14	14	12	14	14	15	98
	St Mary Kilburn	30	30	29	29	27	29	30	28	202
	West Hampstead	60	55	57	56	43	43	45	58	357
	Planning Area 1 Primary Schools	403	366	386	376	359	358	357	373	2,575
	% Capacity Full		91%	96%	93%	89%	89%	89%	93%	
	Number of Unfilled School Places		37	17	27	44	45	46	30	
	Planning Area 2	Brecknock	60	38	42	38	59	34	30	45
Brookfield		60	40	53	36	48	56	45	57	335
Eleanor Palmer		30	30	30	30	30	30	30	30	210
Kentish Town		30	30	29	30	29	30	30	30	208
St Patrick		30	23	21	20	19	26	22	19	150
Torriano		58	58	59	60	59	58	60	57	411
Planning Area 2 Primary Schools		268	219	234	214	244	234	217	238	1,600
% Capacity Full			82%	87%	80%	91%	87%	81%	89%	
Number of Unfilled School Places		49	34	54	24	34	51	30		
Planning Area 3	Abacus Belsize Free School	30	29	25	30	26	19	13	11	153
	Fleet	30	29	30	30	28	29	30	28	204
	Gospel Oak	60	60	58	58	60	58	60	60	414
	Hawley	30	30	30	30	26	27	26	30	199
	Holy Trinity & St Silas	30	30	30	30	30	30	30	30	210
	Holy Trinity NW3	27	24	22	28	27	24	26	25	176
	Primrose Hill	60	56	59	59	60	54	52	58	398
	Rhyl	60	40	50	53	51	51	62	60	367
	Rosary	45	42	37	46	34	44	44	43	290
	St Dominic's	45	5	3	5	1	4	1	22	41
	St Paul's	30	26	30	30	23	30	28	27	194
	Planning Area 3 Primary Schools	447	371	374	399	366	370	372	394	2,646
	% Capacity Full		83%	84%	89%	82%	83%	83%	88%	
Number of Unfilled School Places		76	73	48	81	77	75	53		
Planning Area 4	Christ Church NW1	30	28	29	22	28	24	30	28	189
	Edith Neville	30	28	27	25	19	23	28	24	174
	Netley	60	54	67	46	45	33	40	51	336
	Our Lady's	30	30	28	29	38	39	46	60	270
	Richard Cobden	60	57	59	54	47	38	57	54	366
	St Mary & St Pancras	30	20	30	28	29	28	30	26	191
	St Michael	30	0	0	0	0	0	0	0	0
	Planning Area 4 Primary Schools	270	217	240	204	206	185	231	243	1,526
% Capacity Full		80%	89%	76%	76%	69%	86%	90%		
Number of Unfilled School Places		53	30	66	64	85	39	27		
Planning Area 5	Argyle	60	42	49	54	44	34	30	59	312
	Christopher Hatton	30	28	27	30	30	27	29	26	197
	King's Cross Academy	60	56	49	59	48	51	54	46	363
	St Albans	30	18	25	18	20	24	22	23	150
	St George the Martyr	30	29	25	29	30	30	29	29	201
	St Josephs	30	21	20	22	29	24	25	23	164
	Planning Area 5 Primary Schools	240	194	195	212	201	190	189	206	1,387
% Capacity Full		81%	81%	88%	84%	79%	79%	86%		
Number of Unfilled School Places		46	45	28	39	50	51	34		
Total	All Camden Primary Schools	1,628	1,367	1,429	1,405	1,376	1,337	1,366	1,454	9,734
	% Capacity Full		84%	88%	83%	82%	79%	80%	85%	
	Number of Unfilled School Places		261	199	283	312	351	351	263	

Source: January 2023 DfE School Census / PAN - Planned Admission Number / PA - Planning Area / Numbers and % percentages are clearly illustrated

New Planning Areas established for 2022

Historic bulge class years highlighted

Percentage capacity full calculations are based on PAN: any permanently unused capacity or temporary capping is not included

Primary Reception Trend 2018/19 to 2022/23: Admission Number, Number on Roll, Unfilled Places, % Unfilled Places

Appendix B, Table 2A

School Name	Admission Number					Number on Roll in Reception					Number Unfilled Reception Places					Percentage Unfilled Reception Places %				
	18/19	19/20	20/21	21/22	22/23	18/19	19/20	20/21	21/22	22/23	18/19	19/20	20/21	21/22	22/23	18/19	19/20	20/21	21/22	22/23
Christ Church NW3	28	28	28	28	28	28	28	28	28	28	0	0	0	0	0	0.0%	0.0%	0.0%	0.0%	0.0%
Emmanuel	30	30	30	30	30	30	30	28	30	29	0	0	2	0	1	0.0%	0.0%	6.7%	0.0%	3.3%
Fitzjohn's	30	30	30	30	30	30	29	30	29	30	0	1	0	1	0	0.0%	3.3%	0.0%	3.3%	0.0%
Hampstead Parochial	30	30	30	30	30	30	30	30	30	30	0	0	0	0	0	0.0%	0.0%	0.0%	0.0%	0.0%
Kingsgate	90	90	90	90	90	90	83	88	87	90	0	7	2	3	0	0.0%	7.8%	2.2%	3.3%	0.0%
New End	60	60	60	60	60	38	48	36	46	29	22	12	24	14	31	36.7%	20.0%	40.0%	23.3%	51.7%
St Eugene de Mazenod	30	30	30	30	30	29	30	30	30	30	1	0	0	0	0	3.3%	0.0%	0.0%	0.0%	0.0%
St Luke's	15	15	15	15	15	15	15	15	15	15	0	0	0	0	0	0.0%	0.0%	0.0%	0.0%	0.0%
St Mary's Kilburn	30	30	30	30	30	30	28	30	29	30	0	2	0	1	0	0.0%	6.7%	0.0%	3.3%	0.0%
West Hampstead	60	60	60	60	60	55	47	56	60	55	5	13	4	0	5	8.3%	21.7%	6.7%	0.0%	8.3%
Planning Area 1 Total	403	403	403	403	403	375	368	371	384	366	28	35	32	19	37	6.9%	8.7%	7.9%	4.7%	9.2%
Brecknock	60	60	60	60	60	42	55	40	42	38	18	5	20	18	22	30.0%	8.3%	33.3%	30.0%	36.7%
Brookfield	60	60	60	60	60	50	57	35	51	40	10	3	25	9	20	16.7%	5.0%	41.7%	15.0%	33.3%
Eleanor Palmer	30	30	30	30	30	31	30	30	30	30	-1	0	0	0	0	-3.3%	0.0%	0.0%	0.0%	0.0%
Kentish Town	30	30	30	30	30	30	30	31	31	30	0	0	-1	-1	0	0.0%	0.0%	-3.3%	-3.3%	0.0%
St Patrick's	30	30	30	30	30	23	27	29	16	23	7	3	1	14	7	23.3%	10.0%	3.3%	46.7%	23.3%
Torriano	58	58	58	58	58	59	59	58	59	58	-1	-1	0	-1	0	-1.7%	-1.7%	0.0%	-1.7%	0.0%
Planning Area 2 Total	268	268	268	268	268	235	258	223	229	219	33	10	45	39	49	12.3%	3.7%	16.8%	14.6%	18.3%
Abacus Belsize	30	30	30	30	30	30	29	30	27	29	0	1	0	3	1	0.0%	3.3%	0.0%	10.0%	3.3%
Carlton (CLOSED)	60	60	60			28	29	17			32	31	43			53.3%	51.7%	71.7%		
Fleet	30	30	30	30	30	26	30	30	28	29	4	0	0	2	1	13.3%	0.0%	0.0%	6.7%	3.3%
Gospel Oak	60	60	60	60	60	59	60	60	60	60	1	0	0	0	0	1.7%	0.0%	0.0%	0.0%	0.0%
Hawley	30	30	30	30	30	30	30	29	30	30	0	0	1	0	0	0.0%	0.0%	3.3%	0.0%	0.0%
Holy Trinity NW1	30	30	30	30	30	30	30	30	30	30	0	0	0	0	0	0.0%	0.0%	0.0%	0.0%	0.0%
Holy Trinity NW3	27	27	27	27	27	25	25	28	24	24	2	2	-1	3	3	7.4%	7.4%	-3.7%	11.1%	11.1%
Primrose Hill	60	60	60	60	60	58	60	59	59	56	2	0	1	1	4	3.3%	0.0%	1.7%	1.7%	6.7%
Rhyl	60	60	60	60	60	40	31	43	48	40	20	29	17	12	20	33.3%	48.3%	28.3%	20.0%	33.3%
Rosary	45	45	45	45	45	44	31	43	32	42	1	14	2	13	3	2.2%	31.1%	4.4%	28.9%	6.7%
St Dominic's	45	45	45	45	45	35	20	19	17	5	10	25	26	28	40	22.2%	55.6%	57.8%	62.2%	88.9%
St Paul's	30	30	30	30	30	30	30	29	28	26	0	0	1	2	4	0.0%	0.0%	3.3%	6.7%	13.3%
Planning Area 3 Total	507	507	507	447	447	435	405	417	383	371	72	102	90	64	76	14.2%	20.1%	17.8%	14.3%	17.0%
Christ Church NW1	30	30	30	30	30	22	30	26	26	28	8	0	4	4	2	26.7%	0.0%	13.3%	13.3%	6.7%
Edith Neville	30	30	30	30	30	16	19	27	25	28	14	11	3	5	2	46.7%	36.7%	10.0%	16.7%	6.7%
Netley	60	60	60	60	60	36	43	41	63	54	24	17	19	-3	6	40.0%	28.3%	31.7%	-5.0%	10.0%
Our Lady's	30	30	30	30	30	26	26	22	19	30	4	4	8	11	0	13.3%	13.3%	26.7%	36.7%	0.0%
Richard Cobden	60	60	60	60	60	42	55	57	59	57	18	5	3	1	3	30.0%	8.3%	5.0%	1.7%	5.0%
St Aloysius (CLOSED)	60					22					38			0		63.3%				
St Mary & St Pancras	30	30	30	30	30	29	30	22	27	20	1	0	8	3	10	3.3%	0.0%	26.7%	10.0%	33.3%
St Michael's	30	30	30	30	30	13	17	7	9	0	17	13	23	21	30	56.7%	43.3%	76.7%	70.0%	100.0%
Planning Area 4 Total	330	270	270	270	270	206	220	202	228	217	124	50	68	42	53	37.6%	18.5%	25.2%	15.6%	19.6%
Argyle	60	60	60	60	60	39	40	55	51	42	21	20	5	9	18	35.0%	33.3%	8.3%	15.0%	30.0%
Christopher Hatton	30	30	30	30	30	30	29	30	29	28	0	1	0	1	2	0.0%	3.3%	0.0%	3.3%	6.7%
King's Cross Academy	60	60	60	60	60	60	58	59	60	56	0	2	1	0	4	0.0%	3.3%	1.7%	0.0%	6.7%
St Alban's	30	30	30	30	30	23	28	19	28	18	7	2	11	2	12	23.3%	6.7%	36.7%	6.7%	40.0%
St George the Martyr	30	30	30	30	30	29	30	30	29	29	1	0	0	1	1	3.3%	0.0%	0.0%	3.3%	3.3%
St Joseph's	30	30	30	30	30	24	30	22	24	21	6	0	8	6	9	20.0%	0.0%	26.7%	20.0%	30.0%
Planning Area 5 Total	240	240	240	240	240	205	215	215	221	194	35	25	25	19	46	14.6%	10.4%	10.4%	7.9%	19.2%
Camden Primary Total	1,748	1,688	1,688	1,628	1,628	1,456	1,466	1,428	1,445	1,367	292	222	260	183	261	16.7%	13.2%	15.4%	11.2%	16.0%

Information

YR shown for all Camden schools, Admission Numbers from Admission School Booklets/Schools

Actual School Rolls based on DfE January 2022 School Census (main count) in all years / Numbers and % percentages are clearly illustrated / St Aloysius RC primary school closed in December 2019; Carlton closed August 2021

Percentage unplaced calculations are based on PAN: any permanently unused capacity or temporary capping is not included

Key to Conditional Formatting (% unfilled places) - numbers are rounded which may appear to affect some conditional formatting - the rounding may not be fully visible

The Department for Education (DfE) provides guidance suggesting the efficient operation of the school system and to give space for the expression of parental preference, authorities should target 5% surplus within their area, conditional formatting reflects this.

GREEN - surplus school places equal or under 5.0%
AMBER - surplus school places between 5.01% and 10.0%
RED - surplus school places equal or over 10.01%

Reception Places Unfilled North-West Camden 2018/19 to 2022/23
Appendix B, Table 2C

North West Schools: <u>All</u> Planning Area 1, <u>Part</u> Planning Area 3	Planned Admission Number 2017/18 to 2021/22	Number of unfilled Reception places				
		2018/19	2019/20	2020/21	2021/22	2022/23
West Hampstead (Beckford)	60	5	13	4	0	4
Christ Church, Hampstead	28	0	0	0	0	0
Emmanuel	30	0	0	2	0	0
Fitzjohn's	30	0	1	0	1	0
Hampstead Parochial	30	0	0	0	0	0
Kingsgate	90	0	7	2	3	1
New End	60	22	12	24	14	32
St Eugene de Mazenod	30	1	0	0	0	0
St Luke's Free School	15	0	0	0	0	3
St Mary's Kilburn	30	0	2	0	1	0
West Hampstead (Beckford)	60	5	13	4	0	4
Abacus Belsize Free School	30	0	1	0	3	0
Holy Trinity, NW3	27	2	2	-1	3	2
Rosary	45	1	14	2	13	2
St Paul's	30	0	0	1	2	3
Total	595					
Net Unfilled		36	65	38	40	51
Percentage % Surplus		5.8%	9.7%	7.1%	7.5%	9.5%

Source: January 2023 DfE School Census

PAN: any permanently unused capacity or temporary capping is not included

Numbers shown except for percentage surplus

Primary School Actual Net Capacity 2023

Appendix B: Table 3A

DfE No	School	As At May NOR* (DfE)	Net Capacity 2023	Net Capacity % Surplus MAY
3323	Christ Church, Hampstead	192	180	-6.7%
3340	Emmanuel	204	210	2.9%
2797	Fitzjohn's	206	210	1.9%
3352	Hampstead Parochial	204	210	2.9%
2843	Kingsgate	598	895	33.2%
2438	New End	316	411	23.1%
3649	St Eugene de Mazenod	198	210	5.7%
2000	St Luke's Free School	98	105	6.7%
3517	St Mary's Kilburn	202	210	3.8%
2036	West Hampstead (Beckford)	357	420	15.0%
Planning Area 1 Total		2,575	3,061	15.9%
2065	Brecknock	286	411	30.4%
2078	Brookfield	335	420	20.2%
2841	Eleanor Palmer	210	210	0.0%
3370	Kentish Town	208	210	1.0%
3560	St Patrick	150	210	28.6%
2603	Torriano Primary	411	426	3.5%
Planning Area 2 Total		1,600	1,887	15.2%
2001	Abacus Belsize Free School	153	210	27.1%
2219	Fleet	204	210	2.9%
2775	Gospel Oak	414	420	1.4%
2290	Hawley Primary	199	210	5.2%
3361	Holy Trinity and Saint Silas	210	190	-10.5%
3359	Holy Trinity, NW3	176	168	-4.8%
2475	Primrose Hill	398	420	5.2%
2502	Rhyl	367	552	33.5%
3391	Rosary	290	315	7.9%
3429	St Dominic's	41	315	87.0%
3568	St Paul's	194	210	7.6%
Planning Area 3 Total		2,646	3,220	17.8%
3327	Christ Church, NW1	189	210	10.0%
2184	Edith Neville	174	210	17.1%
2436	Netley	336	420	20.0%
3655	Our Lady	270	210	-28.6%
2507	Richard Cobden	366	420	12.9%
3521	St Mary & St Pancras	191	210	9.0%
Planning Area 4 Total		1,526	1,680	9.2%
2019	Argyle	312	420	25.7%
2842	Christopher Hatton	197	210	6.2%
2002	King's Cross Academy	363	420	13.6%
3398	St Alban's	150	210	28.6%
3441	St George the Martyr's	201	210	4.3%
3482	St Joseph's	164	209	21.5%
Planning Area 5 Total		1,387	1,679	17.4%
Camden Primary Total		9,734	11,527	15.6%

Information

School Net Capacity 2023 provided by Camden Property and Contracts

*Includes actual numbers on roll (NOR) from provisional May 2023 DfE School Census (YR-6), representing the 2022/23 cohort

Primary Actual Net Capacity Surplus Trend 2019 to 2023

Appendix B: Table 3B

Camden Total		Percentage % Actual Net Capacity Surplus					Numbers 2021		
		2019	2020	2021	2022	2023	*Actual Pupils NOR MAY	Net Capacity	Actual Surplus NOR/NetCap
Primary	PA1	12.4	13.3	15.5	10.0	15.9	2,575	3,061	486
	PA2	11.7	13.9	17.4	0.1	15.2	1,600	1,887	287
	PA3	10.7	11.2	13.2	6.7	17.8	2,646	3,220	574
	PA4	23.7	15.8	16.5	-7.9	9.2	1,526	1,680	154
	PA5	14.5	14.2	18.1	2.9	17.4	1,387	1,679	292
	Camden Primary Total	14.6	13.6	15.9	3.8	15.6	9,734	11,527	1,793

Information

School Net Capacity 2023 provided by Camden Property and Contracts

*Includes actual numbers on roll (NOR) from the provisional May 2023 DfE School Census (YR-6), representing the 2022/23 cohort

Percentage % net capacity surplus is based on the May DfE School Census 2019, 2020, and 2022, 2023

Reception Primary Offer Day: School Analysis Trend 2021 to 2023

Appendix B, Table 4A

Offered Primary School	Admission Number*			Camden Resident			Non-Resident		All Offers			Camden Residents %			2023 Places		
	2021	2022	2023	2021	2022	2023	2021	2022	2021	2022	2023	2021	2022	2023	Available	% full	Allocated
Christ Church Primary School (Camden NW3)	28	28	28	24	24	26	4	4	28	28		89%	86%	#DIV/0!	0	0%	0
Emmanuel C of E School	30	30	30	30	27	29	0	3	30	30		97%	90%	#DIV/0!	0	0%	0
Fitzjohn's School	30	30	30	30	29	29	0	1	30	30		100%	97%	#DIV/0!	0	0%	0
Hampstead Parochial C of E School	30	30	30	26	22	20	4	8	30	30		93%	73%	#DIV/0!	0	0%	0
Kingsgate Primary School	90	90	90	72	80	65	18	10	90	90		86%	89%	#DIV/0!	0	0%	2
New End Primary School	60	60	60	53	47	28	7	11	58	58		98%	81%	#DIV/0!	2	0%	13
St Eugene de Mazenod RC School	30	30	30	22	23	21	8	7	30	30		73%	77%	#DIV/0!	0	0%	0
St Luke's C of E 'Free School'	15	15	15	10	12	14	5	3	15	15		93%	80%	#DIV/0!	0	0%	0
St Mary's Kilburn CofE Primary School	30	30	30	27	28	23	3	2	30	30		83%	93%	#DIV/0!	0	0%	0
West Hampstead Primary School (Beckford)	60	60	60	50	49	52	10	11	60	60		92%	82%	#DIV/0!	0	0%	0
Total Planning Area 1	403	403	403	344	341	307	59	60	401	0		86%	#DIV/0!	#DIV/0!	403	0%	15
Brecknock Primary School	60	60	60	30	18	24	11	19	37	37		63%	49%	#DIV/0!	60	0%	2
Brookfield Primary School	60	60	60	46	38	48	13	10	48	48		68%	79%	#DIV/0!	60	0%	0
Eleanor Palmer School	30	30	30	29	24	26	1	6	30	30		83%	80%	#DIV/0!	0	0%	0
Kentish Town C of E Primary School #	30	30	30	29	26	27	0	0	26	26		100%	100%	#DIV/0!	4	0%	0
St Patrick's Roman Catholic Primary School	30	30	30	29	18	18	1	0	18	18		86%	100%	#DIV/0!	12	0%	0
Torriano Primary School	58	58	58	43	40	50	15	18	58	58		72%	69%	#DIV/0!	0	0%	0
Total Planning Area 2	268	268	268	206	164	193	41	53	217	0		95%	#DIV/0!	#DIV/0!	268	0%	2
Abacus Belsize 'Free School'	30	30	30	29	29	30	1	1	30	30		93%	97%	#DIV/0!	0	0%	0
Carlton Primary School (closed)	0	0	0	0	0		0	0	0			100%	n/a	n/a	n/a	n/a	n/a
Fleet School	30	30	30	30	30	29	0	0	30	30		100%	100%	#DIV/0!	0	0%	0
Gospel Oak Primary School	60	60	60	60	60	60	0	0	60	60		100%	100%	#DIV/0!	0	0%	0
Hawley Primary School	30	30	30	30	29	30	0	1	30	30		100%	97%	#DIV/0!	0	0%	0
Holy Trinity & St. Silas C of E Primary School	30	30	30	30	30	30	0	0	30	30		97%	100%	#DIV/0!	0	0%	0
Holy Trinity C of E School (NW3)	27	27	27	26	26	27	1	1	27	27		96%	96%	#DIV/0!	0	0%	0
Primrose Hill Primary School	60	60	60	59	56		1	3	59	59		98%	95%	#DIV/0!	1	0%	0
Rhyl Primary School	60	60	60	59	37		1	0	37	37		100%	100%	#DIV/0!	23	0%	6
Rosary RC Primary School	45	45	45	37	42		3	2	44	44		89%	95%	#DIV/0!	0	0%	0
St Dominic's RC Primary School	45	45	45	30	23		0	0	23	23		100%	100%	#DIV/0!	22	0%	8
St Paul's CofE School	30	30	30	29	29	29	1	1	30	30		100%	97%	#DIV/0!	0	0%	0
Total Planning Area 3	447	447	447	419	391		8	9	400	0		93%	#DIV/0!	#DIV/0!	447	0%	14
Christ Church C of E School (Camden NW1)	30	30	30	29	29	25	0	1	30	30		100%	97%	#DIV/0!	0	0%	0
Edith Neville Primary School	30	30	30	26	30	28	0	0	30	30		97%	100%	#DIV/0!	30	0%	0
Netley Primary School	60	60	60	59	57	45	1	2	59	59		100%	97%	#DIV/0!	60	0%	2
Our Lady's RC Primary School	30	30	30	21	30	29	0	0	30	30		96%	100%	#DIV/0!	30	0%	0
Richard Cobden Primary School	60	60	60	59	49	55	1	1	50	50		98%	98%	#DIV/0!	10	0%	2
St Aloysius RC Primary School (closed)	0	0	0	n/a			n/a		n/a			n/a	n/a	n/a	n/a	n/a	n/a
St Mary and St Pancras CofE School	30	30	30	28	24		1	0	24	24		100%	100%	#DIV/0!	6	0%	2
St Michael's Camden Town CofE School	30	30	30	9	0	0	0	0	0	0	0	100%				0%	
Total Planning Area 4	270	270	270	231	219		3	4	223	0		91%	#DIV/0!	#DIV/0!	270	0%	6
Argyle Primary School	60	60	60	41	41	44	2	2	43	43		95%	95%	#DIV/0!	17	0%	5
Christopher Hatton School	30	30	30	25	25	28	5	5	30	30		93%	83%	#DIV/0!	0	0%	0
King's Cross Academy	60	60	60	38	40	43	24	20	60	60		63%	67%	#DIV/0!	0	0%	0
St Alban's C of E Primary School	30	30	30	19	12		0	1	13	13		76%	92%	#DIV/0!	17	0%	1
St George The Martyr Primary School	30	30	30	28	27		0	1	28	28		93%	96%	#DIV/0!	2	0%	1
St Joseph's RC Primary School (Camden)	30	30	30	14	16		7	4	20	20		78%	80%	#DIV/0!	10	0%	0
Total Planning Area 5	240	240	240	165	161		38	33	194	0		90%	#DIV/0!	#DIV/0!	240	0%	7
Total Camden Primary Offer	1,628	1,628	1,628	1,365	1,276		149	159	1,435	0		91%	#DIV/0!	#DIV/0!	1,628	0%	44
Other LA School Offer				157	156		0	0	156	156		100%	100%	100%			
Total Offers				1,522	1,415		149	139	1,554	1,554		92%	91%	91%			
Total Applicants				1,538	1,424		450	495	1,919	1,880		77%	76%	76%			
# No Offer (unplaced) / Other LA School				16	9		301	356	365	326		3%	3%	4%			
% No Offer (unplaced) / Other LA School				1%	1%		67%	72%	19%	17%							

Source: Admissions Offer Day - 2020 (16th April) / 2021 (16th April) / 2022 (19 April)- THIS IS THE OFFER DAY POSITION ONLY - SEN & Late applicants are INCLUDED in this analysis

Notes: Permanent Changes: St Aloysius RC (PA3) closed December 2019 (2019/20) -2FE, Carlton Primary School (PA2) closed August 2021 (2021/22)-2FE.

Unplaced non-residents: Camden is not responsible for finding places, these children may be allocated a school place by another borough

Borough Residence of Children Attending Camden Schools: Trend 2018/19 to 2022/23

Appendix B: Table 5A

Primary Reception to Year 6	2019		2020		2021		2022		2023	
	No.	%	No.	%	No.	%	No.	%	No.	%
Camden	9,353	87%	9,120	87%	8,815	86%	8,706	86%	8,347	85%
Islington	557	5%	576	5%	612	6%	615	6%	600	6%
Brent	335	3%	339	3%	352	3%	331	3%	347	4%
Barnet	252	2%	251	2%	226	2%	235	2%	262	3%
Haringey	54	1%	51	0%	44	0%	77	1%	39	0%
Westminster	76	1%	66	1%	67	1%	38	0%	82	1%
Enfield	10	0%	11	0%	3	0%	5	0%	4	0%
Hackney	27	0%	21	0%	15	0%	17	0%	10	0%
Other London Borough	73	1%	69	1%	67	1%	66	1%	67	1%
Outside London	20	0%	14	0%	11	0%	12	0%	20	0%
Camden Primary Total	10,757	100%	10,518	100%	10,212	100%	10,102	100%	9,778	100%

Source: January DfE School Census 2019 to 2023

Children attending Camden schools / Percentages are rounded / Numbers and percentages are clearly shown

Residence of Children Attending Camden Primary Schools: Percentage % Composition and Year Group Summary 2018/19 to 2022/23

Appendix B: Table 5B

PA	School Name	2019 %				2020 %				2021 %				2022 %				2023 %			
		CR		OBR		CR		OBR		CR		OBR		CR		OBR		CR		OBR	
		R	R-6	R	R-6	R	R-6	R	R-6	R	R-6	R	R-6	R	R-6	R	R-6	R	R-6	R	R-6
	Christ Church NW3	89	77	11	23	82	81	18	19	86	79	14	21	89	78	11	22	79	79	21	21
	Emmanuel	90	90	10	10	100	93	0	7	96	92	4	8	93	88	7	12	86	83	14	17
	Fitzjohn's	100	94	0	6	100	95	0	5	90	92	10	8	100	93	0	7	97	91	3	9
	Hampstead Parochial	87	78	13	22	77	78	23	22	90	78	10	22	80	78	20	22	70	75	30	25
	Kingsgate	79	76	21	24	81	73	19	27	77	71	23	29	76	73	24	27	81	73	19	27
	New End	92	85	8	15	88	85	13	15	94	85	6	15	85	84	15	16	66	84	34	16
	St Eugene de Mazenod	62	60	38	40	70	63	30	37	67	61	33	39	77	63	23	37	73	62	27	38
	St Luke's Free School	73	66	27	34	73	67	27	33	93	69	7	31	67	70	33	30	71	71	29	29
	St Mary's Kilburn	90	82	10	18	75	80	25	20	77	78	23	22	90	80	10	20	87	78	13	22
	West Hampstead (Beckford)	89	82	11	18	77	82	23	18	89	83	11	17	82	83	18	17	80	80	20	20
	Planning Area 1	85	79	15	21	82	80	18	20	86	79	14	21	84	79	16	21	80	78	20	22
	Planning Area 2	Brecknock	64	67	36	33	67	67	33	33	63	67	38	33	60	64	40	36	58	62	42
Brookfield		72	75	28	25	72	76	28	24	71	74	29	26	80	76	20	24	80	79	20	21
Eleanor Palmer		87	75	13	25	73	72	27	28	83	74	17	26	90	76	10	24	83	78	17	22
Kentish Town		100	97	0	3	97	97	3	3	97	97	3	3	100	97	0	3	90	95	10	5
St Patrick		96	90	4	10	93	92	7	8	86	92	14	8	94	93	6	7	91	94	9	6
Torriano		75	80	25	20	61	76	39	24	72	73	28	27	73	73	27	27	74	73	26	27
Planning Area 2		82	81	18	19	77	80	23	20	79	80	21	20	83	80	17	20	78	78	22	22
Planning Area 3		Abacus Belsize Free School	100	85	0	15	90	85	10	15	93	87	7	13	96	88	4	12	97	88	3
	Carlton	93	97	7	3	97	98	3	2	100	98	0	2								
	Fleet	100	100	0	0	97	98	3	2	100	96	0	4	100	97	0	3	97	96	3	4
	Gospel Oak	98	98	2	2	100	99	0	1	100	99	0	1	100	100	0	0	98	99	2	1
	Hawley	100	96	0	4	97	95	3	5	100	98	0	2	100	98	0	2	97	96	3	4
	Holy Trinity & St Silas	90	94	10	6	100	95	0	5	97	93	3	7	93	92	7	8	97	93	3	7
	Holy Trinity NW3	100	96	0	4	96	98	4	2	96	98	4	2	96	96	4	4	96	96	4	4
	Primrose Hill	90	93	10	7	95	95	5	5	98	95	2	5	98	95	2	5	96	94	4	6
	Rhyl	100	99	0	1	100	99	0	1	98	98	2	2	96	98	4	2	100	99	0	1
	Rosary	84	85	16	15	94	86	6	14	84	87	16	13	91	88	9	12	98	89	2	11
	St Dominic's	91	96	9	4	90	96	10	4	100	97	0	3	100	96	0	4	100	100	0	0
	St Paul's	90	95	10	5	97	95	3	5	97	94	3	6	89	89	11	11	92	93	8	7
Planning Area 3	95	95	5	5	96	95	4	5	97	95	3	5	96	94	4	6	97	95	3	5	
Planning Area 4	Christ Church NW1	95	97	5	3	97	97	3	3	96	95	4	5	100	98	0	2	100	98	0	2
	Edith Neville	100	96	0	4	100	98	0	2	100	98	0	2	100	97	0	3	100	98	0	2
	Netley	100	98	0	2	100	99	0	1	100	100	0	0	62	56	38	44	98	99	2	1
	Our Lady's	96	91	4	9	96	92	4	8	95	94	5	6	98	99	2	1	100	98	0	2
	Richard Cobden	100	99	0	1	100	99	0	1	96	98	4	2	100	97	0	3	98	98	2	2
	St Mary & St Pancras	100	99	0	1	100	99	0	1	100	99	0	1	96	98	4	2	100	98	0	2
	St Michael	100	96	0	4	100	94	0	6	100	96	0	4	100	97	0	3				
	Planning Area 4	99	97	1	3	99	97	1	3	98	97	2	3	94	92	6	8	99	98	1	2
Planning Area 5	Argyle	100	96	0	4	98	96	3	4	95	97	5	3	98	97	2	3	95	95	5	5
	Christopher Hatton	83	80	17	20	79	79	21	21	97	81	3	19	90	81	10	19	82	81	18	19
	King's Cross Academy	60	59	40	41	50	59	50	41	63	58	37	42	62	56	38	44	64	53	36	47
	St Albans	83	84	17	16	89	85	11	15	79	85	21	15	100	90	0	10	89	93	11	7
	St George the Martyr	97	93	3	7	100	95	0	5	97	96	3	4	100	96	0	4	89	96	11	4
	St Joseph's	79	67	21	33	73	71	27	29	91	70	9	30	63	70	38	30	67	65	33	35
	Planning Area 5	84	80	16	20	82	81	18	19	87	81	13	19	85	82	15	18	80	78	20	22
Camden Primary Total	89	86	11	14	87	86	13	14	89	86	11	14	88	85	12	15	87	86	13	14	

Source: January DfE School Census 2019 to 2023

Percentages are based on all pupils in reception or reception to year 6: CR - Camden Resident / OBR - Other Borough Resident

Carlton primary school closed in 2021, St Michaels primary school closed in 2022; historic data continues to be shown

Camden Residents in Other Borough Primary Schools: 2019 to 2023

Appendix B: Table 6

Borough Schools	2019 Reception to Year 6	2020 Reception to Year 6	2021 Reception to Year 6	2022 Reception to Year 6	2023 Reception to Year 6
Barking & Dagenham	0	0	<5	0	
Barnet	79	77	80	81	44
Brent	239	259	257	264	252
City	0	0	0	0	0
Croydon	0	0	0	0	0
Ealing	<5	0	<5	0	0
Enfield	<5	<5	<5	<5	1
Greenwich	0	0	0	0	0
Hammersmith & Fulham	<5	<5	0	<5	7
Hackney	19	15	16	17	20
Haringey	89	76	75	70	72
Harrow	0	<5	<5	0	0
Hertfordshire	<5	0	0	0	2
Hounslow	0	0	0	0	
Islington	283	301	302	294	284
Kensington & Chelsea	19	20	16	11	7
Lambeth	<5	<5	<5	<5	1
Lewisham	0	<5	<5	0	2
Newham	<5	0	<5	<5	2
Redbridge			0	0	0
Richmond	<5	0	0	<5	0
Southwark	<5	0	<5	11	13
Sutton	0	0	0	0	0
Tower Hamlets		<5	<5	<5	3
Waltham Forest	0	0	0	0	0
Wandsworth	0	0	<5	<5	0
Westminster	727	666	603	555	561
Camden Residents Other Borough Total	1,479	1,427	1,369	1,318	1,271

Source: DfE School Census, January 2019-23 DfE summary

Blanks indicate borough not supplying resident data, academy data provided in later years / <5 indicates numbers less than or equal to 5

Camden residents attending other borough schools / includes all residents of primary age

Camden Planning Area 1 (North West) GLA School Roll Projections: Primary Age Forecasts

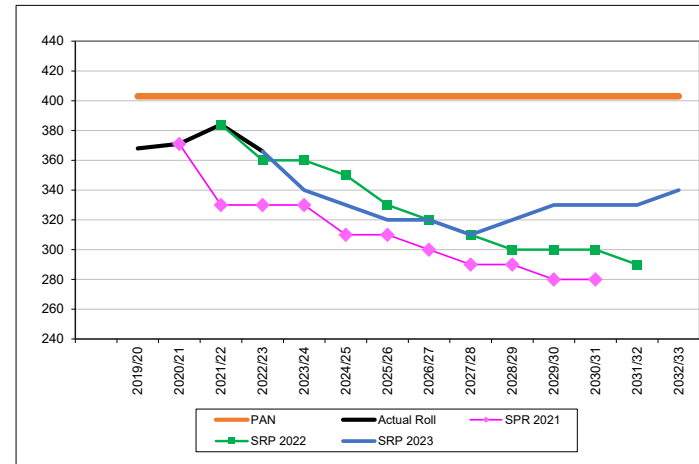
SRP = School Roll Projections received from GLA

PAN = (Planned Admission Number) based on September.
Actual School Rolls: based on children attending by national curriculum year group from the January DfE School Census.

Forecasts SRP = GLA school roll forecasts should be treated with caution, estimates change/not actuals, therefore are rounded to nearest 10 to avoid misinterpretation.

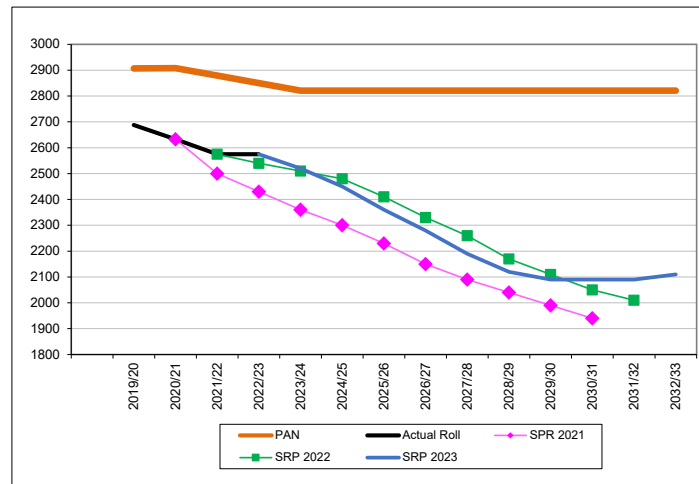
GLA Forecast: children aged 4 years old/reception

PA1	PAN	Actual Roll	SRP 2021	SRP 2022	SRP 2023	No. Surplus/Deficit		% Surplus/Deficit	
						PAN	PAN	PAN	PAN
2014/15	432	423				9	2.1%		
2015/16	432	419				13	3.0%		
2016/17	432	388				44	10.2%		
2017/18	403	376				27	6.7%		
2018/19	403	375				28	6.9%		
2019/20	403	368				35	8.7%		
2020/21	403	371	371			32	7.9%		
2021/22	403	384	330	384		19	4.7%		
2022/23	403	366	330	360	366	37	9%		
2023/24	403		330	360	340	63	16%		
2024/25	403		310	350	330	73	18%		
2025/26	403		310	330	320	83	21%		
2026/27	403		300	320	320	83	21%		
2027/28	403		290	310	310	93	23%		
2028/29	403		290	300	320	83	21%		
2029/30	403		280	300	330	73	18%		
2030/31	403		280	300	330	73	18%		
2031/32	403			290	330	73	18%		
2032/33	403				340	63	27%		



GLA Forecast: children aged 4 to 10 years old/reception to year 6

PA1	PAN	Actual Roll	SRP 2021	SRP 2022	SRP 2023	No. Surplus/Deficit		% Surplus/Deficit	
						PAN	PAN	PAN	PAN
2014/15	2,664	2,604				60	2.3%		
2015/16	2,754	2,682				72	2.6%		
2016/17	2,844	2,747				97	3.4%		
2017/18	2,905	2,759				146	5.0%		
2018/19	2,936	2,729				207	7.1%		
2019/20	2,907	2,688				219	7.5%		
2020/21	2,908	2,633	2,633			275	9.5%		
2021/22	2,879	2,575	2,500	2,575		304	10.6%		
2022/23	2,850	2,575	2,430	2,540	2,575	275	10%		
2023/24	2,821		2,360	2,510	2,520	301	11%		
2024/25	2,821		2,300	2,480	2,450	371	13%		
2025/26	2,821		2,230	2,410	2,360	461	16%		
2026/27	2,821		2,150	2,330	2,280	541	19%		
2027/28	2,821		2,090	2,260	2,190	631	22%		
2028/29	2,821		2,040	2,170	2,120	701	25%		
2029/30	2,821		1,990	2,110	2,090	731	26%		
2030/31	2,821		1,940	2,050	2,090	731	26%		
2031/32	2,821			2,010	2,090	731	26%		
2032/33	2,821				2,110	711	29%		



Camden Planning Area 2 (North East) GLA School Roll Projections: Primary Age Forecasts

Appendix B, Table 7B

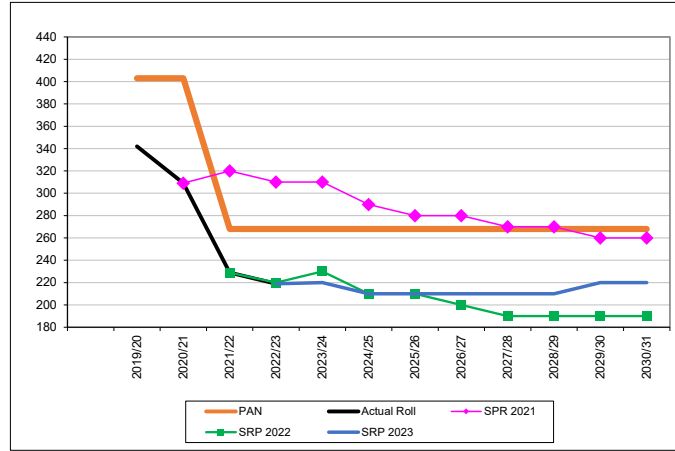
SRP = School Roll Projections received from GLA

PAN: (Planned Admission Number) based on September.
Actual School Rolls: based on children attending by national curriculum year group from the January DfE School Census.

Forecasts SRP = GLA school roll forecasts should be treated with caution, estimates change/not actuals, therefore rounded nearest 10 to avoid misinterpretation.

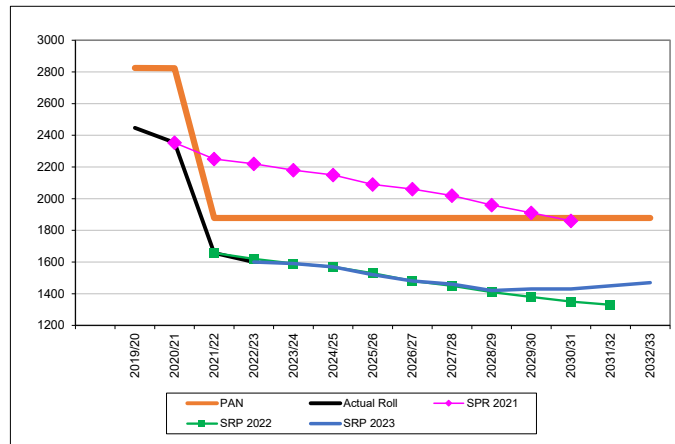
GLA Forecast: children aged 4 years old/reception

PA2	PAN	Actual Roll	SRP 2021	SRP 2022	SRP 2023	No. Surplus/Deficit		% Surplus/Deficit	
						PAN	PAN	PAN	PAN
2014/15	405	386				19		4.7%	
2015/16	403	383				20		5.0%	
2016/17	403	353				50		12.4%	
2017/18	403	351				52		12.9%	
2018/19	403	341				62		15.4%	
2019/20	403	342				61		15.1%	
2020/21	403	309	309			94		23.3%	
2021/22	268	229	320	229		39		14.6%	
2022/23	268	219	310	220	219	49		18%	
2023/24	268		310	230	220	48		18%	
2024/25	268		290	210	210	58		22%	
2025/26	268		280	210	210	58		22%	
2026/27	268		280	200	210	58		22%	
2027/28	268		270	190	210	58		22%	
2028/29	268		270	190	210	58		22%	
2029/30	268		260	190	220	48		18%	
2030/31	268		260	190	220	48		18%	
2031/32	268			190	220	48		18%	
2032/33	268				230	38		29%	



GLA Forecast: children aged 4 to 10 years old/reception to year 6

PA2	PAN	Actual Roll	SRP 2021	SRP 2022	SRP 2023	No. Surplus/Deficit		% Surplus/Deficit	
						PAN	PAN	PAN	PAN
2014/15	2,843	2,669				174		6.1%	
2015/16	2,833	2,664				169		6.0%	
2016/17	2,831	2,627				204		7.2%	
2017/18	2,829	2,568				261		9.2%	
2018/19	2,827	2,510				317		11.2%	
2019/20	2,825	2,447				378		13.4%	
2020/21	2,823	2,353	2,353			470		16.6%	
2021/22	1,878	1,657	2,250	1,657		221		11.8%	
2022/23	1,878	1,600	2,220	1,620	1,600	278		15%	
2023/24	1,878		2,180	1,590	1,590	288		15%	
2024/25	1,878		2,150	1,570	1,570	308		16%	
2025/26	1,878		2,090	1,530	1,520	358		19%	
2026/27	1,878		2,060	1,480	1,480	398		21%	
2027/28	1,878		2,020	1,450	1,460	418		22%	
2028/29	1,878		1,960	1,410	1,420	458		24%	
2029/30	1,878		1,910	1,380	1,430	448		24%	
2030/31	1,878		1,860	1,350	1,430	448		24%	
2031/32	1,878			1,330	1,450	428		23%	
2032/33	1,878				1,470	408		29%	



Camden Planning Area 3 (Central) GLA School Roll Projections: Primary Age Forecasts

SRP = School Roll Projections received from GLA

Actuals = PAN: (Planned Admission Number) based on September.

Actual School Rolls: based on children attending by national curriculum year group from the January DfE School Census.

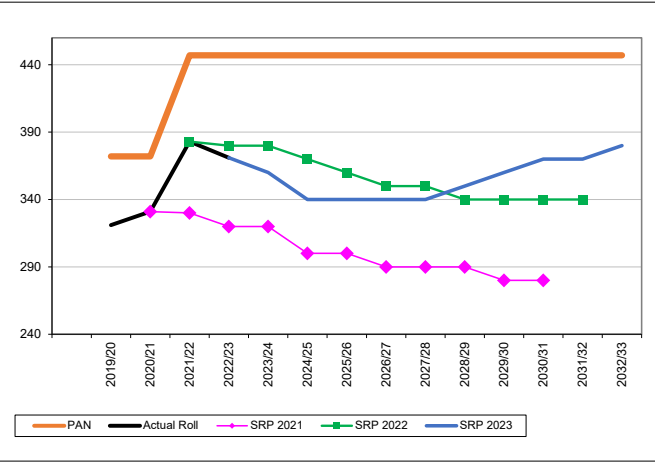
Forecasts SRP = GLA school roll forecasts should be treated with caution, estimates change/not actuals, therefore rounded nearest 10 to avoid misinterpretation.

Appendix B, Table 7C

2019/20 Temporary Capping Not Shown (-30): -30 Rhyl
 2019/20 Temporary Capping Not Shown (-30): -30 Carlton
 2021/22 CLOSURE Permanent Places (-60): -60 All years Carlton
 2022/23 Permanent Places (-15): -15 St Dominic's

GLA Forecast: children aged 4 years old/reception

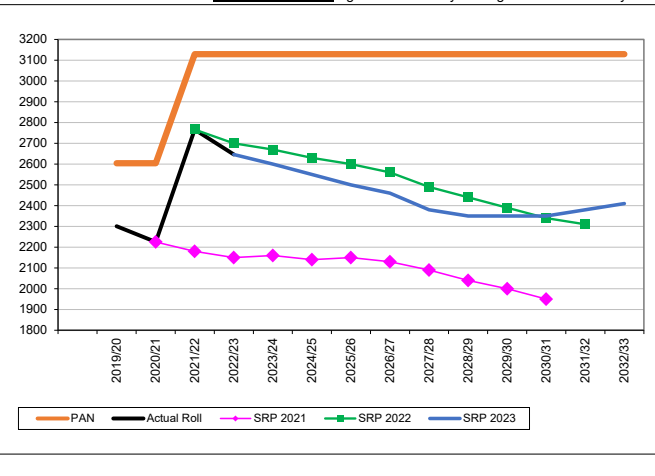
PA3	PAN	Actual Roll	SRP 2020	SRP 2021	SRP 2022	SRP 2023	Surplus/Deficit PAN	% Surplus/Deficit PAN
2014/15	371	352					19	5.1%
2015/16	371	364					7	1.9%
2016/17	372	328					44	11.8%
2017/18	372	324					48	12.9%
2018/19	372	329					43	11.6%
2019/20	372	321	321				51	13.7%
2020/21	372	331	310	331			41	11.0%
2021/22	447	383	310	330	383		64	14.3%
2022/23	447	371	300	320	380	371	76	17%
2023/24	447		300	320	380	360	87	19%
2024/25	447		290	300	370	340	107	24%
2025/26	447		290	300	360	340	107	24%
2026/27	447		290	290	350	340	107	24%
2027/28	447		290	290	350	340	107	24%
2028/29	447		290	290	340	350	97	22%
2029/30	447		300	280	340	360	87	19%
2030/31	447			280	340	370	77	17%
2031/32	447				340	370	77	17%
2032/33	447					380	67	25%



GLA Forecast: children aged 4 to 10 years old/reception to year 6

PA3	PAN	Actual Roll	SRP 2020	SRP 2021	SRP 2022	SRP 2023	No Surplus/Deficit		%
							PAN	PAN	PAN
2014/15	2,361	2,237					124	5.3%	
2015/16	2,391	2,270					121	5.1%	
2016/17	2,424	2,283					141	5.8%	
2017/18	2,484	2,280					204	8.2%	
2018/19	2,544	2,312					232	9.1%	
2019/20	2,604	2,301	2,301				303	11.6%	
2020/21	2,604	2,225	2,250	2,225			379	14.6%	
2021/22	3,129	2,766	2,210	2,180	2,766		363	11.6%	
2022/23	3,129	2,646	2,140	2,150	2,700	2,646	483	15%	
2023/24	3,129		2,120	2,160	2,670	2,600	529	17%	
2024/25	3,129		2,080	2,140	2,630	2,550	579	19%	
2025/26	3,129		2,060	2,150	2,600	2,500	629	20%	
2026/27	3,129		2,030	2,130	2,560	2,460	669	21%	
2027/28	3,129		2,020	2,090	2,490	2,380	749	24%	
2028/29	3,129		2,010	2,040	2,440	2,350	779	25%	
2029/30	3,129		2,010	2,000	2,390	2,350	779	25%	
2030/31	3,129			1,950	2,340	2,350	779	25%	
2031/32	3,129				2,310	2,380	749	24%	
2032/33	3,129					2,410	719	26%	

Note chart scales: Age 4 Increases by 20 / Age 4-10 Increases by 100



Camden Planning Areas 1-3 (North-Central) GLA School Roll Projections: Primary Age Forecasts

Appendix B, Table 7D

SRP = School Roll Projections received from GLA

PAN: (Planned Admission Number) based on September

Actual School Rolls: based on children attending national curriculum year group in January DfE School Census.

Forecasts SRP = GLA school roll forecasts should be treated with caution, estimates are likely to change and are not actuals, therefore are rounded to nearest 10 to avoid misinterpretation. Summed forecast totals for: **PA1-3 total** and **Borough total** are calculated from original numbers, before being rounded to nearest 10.

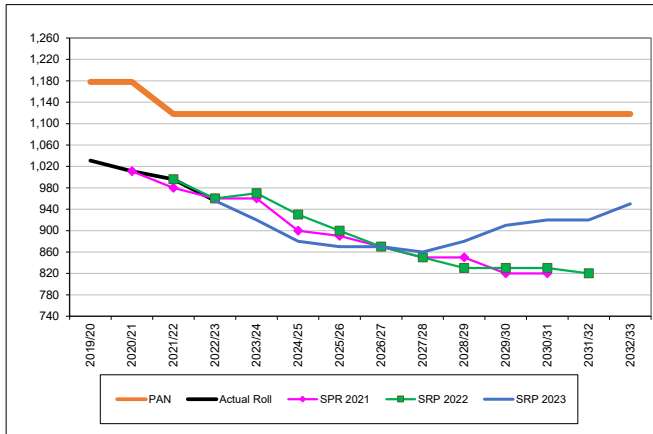
2019/20 Temporary Capping Not Shown (-60): -30 Carlton (PA2) & -30 Rhyl (PA3)

2021/22 CLOSURE Permanent Places (-60): -60 All years Carlton (PA3)

2022/23 Permanent Places (-15): -15 St Dominic's (PA3)

GLA Forecast: children aged 4 years old/reception

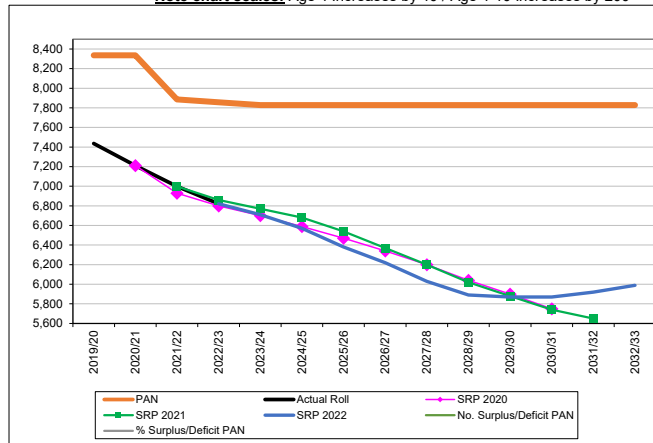
PA1,2,3	PAN	Actual Roll	SPR 2021	SRP 2022	SRP 2023	No. Surplus/Deficit		% Surplus/Deficit	
						PAN	PAN		
2014/15	1,208	1,161				47	3.9%		
2015/16	1,206	1,166				40	3.3%		
2016/17	1,207	1,069				138	11.4%		
2017/18	1,178	1,051				127	10.8%		
2018/19	1,178	1,045				133	11.3%		
2019/20	1,178	1,031				147	12.5%		
2020/21	1,178	1,011	1,011			167	14.2%		
2021/22	1,118	996	980	996		122	10.9%		
2022/23	1,118	956	960	960	956	162	14.5%		
2023/24	1,118		960	970	920	198	17.7%		
2024/25	1,118		900	930	880	238	21.3%		
2025/26	1,118		890	900	870	248	22.2%		
2026/27	1,118		870	870	870	248	22.2%		
2027/28	1,118		850	850	860	258	23.1%		
2028/29	1,118		850	830	880	238	21.3%		
2029/30	1,118		820	830	910	208	18.6%		
2030/31	1,118		820	830	920	198	17.7%		
2031/32	1,118			820	920	198	17.7%		
2032/33	1,118				950	168	25.0%		



GLA Forecast: children aged 4 to 10 years old/reception to year 6

PA1,2,3	PAN	Actual Roll	SRP 2020	SRP 2021	SRP 2022	No. Surplus/Deficit		% Surplus/Deficit	
						PAN	PAN		
2014/15	7,868	7,510				358	4.6%		
2015/16	7,978	7,616				362	4.5%		
2016/17	8,099	7,657				442	5.5%		
2017/18	8,218	7,607				611	7.4%		
2018/19	8,307	7,551				756	9.1%		
2019/20	8,336	7,436				900	10.8%		
2020/21	8,335	7,211	7,211			1124	13.5%		
2021/22	7,886	6,998	6,930	6,998		888	11.3%		
2022/23	7,857	6,821	6,800	6,860	6,821	1036	13.2%		
2023/24	7,828		6,700	6,770	6,710	1118	14.3%		
2024/25	7,828		6,590	6,680	6,570	1258	16.1%		
2025/26	7,828		6,470	6,540	6,380	1448	18.5%		
2026/27	7,828		6,340	6,370	6,220	1608	20.5%		
2027/28	7,828		6,200	6,200	6,030	1798	23.0%		
2028/29	7,828		6,040	6,020	5,890	1938	24.8%		
2029/30	7,828		5,900	5,880	5,870	1958	25.0%		
2030/31	7,828		5,750	5,740	5,870	1958	25.0%		
2031/32	7,828			5,650	5,920	1908	24.4%		
2032/33	7,828				5,990	1838	27%		

Note chart scales: Age 4 Increases by 40 / Age 4-10 Increases by 200



Camden Planning Area 4 (South) GLA School Roll Projections: Primary Age Forecasts

SRP = School Roll Projections received from GLA

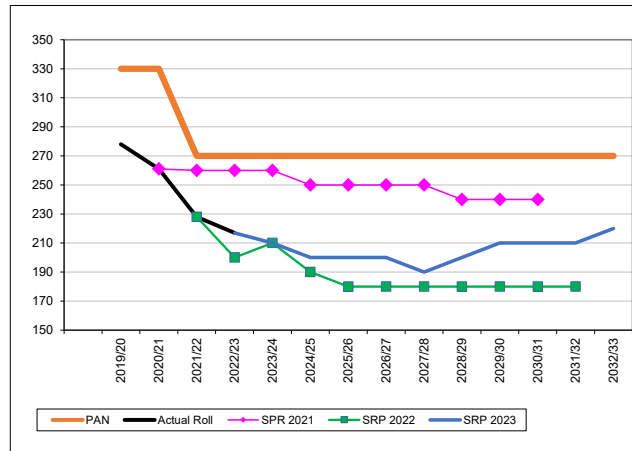
Actuals = PAN: (Planned Admission Number) based on September.
Actual School Rolls: based on children attending by national curriculum year group from the January DfE School Census.

Forecasts SRP = GLA school roll forecasts should be treated with caution, estimates change/not actuals, therefore rounded nearest 10 to avoid misinterpretation.

Appendix B, Table 7E
 2019/20 **CLOSURE** Permanent Places (-60): -60 **All** years St Aloysius
 2022/23 **CLOSURE** Permanent Places (-30): -30 **All** years St Michael's
 2022/23 Permanent Places (-15): -15 Netley

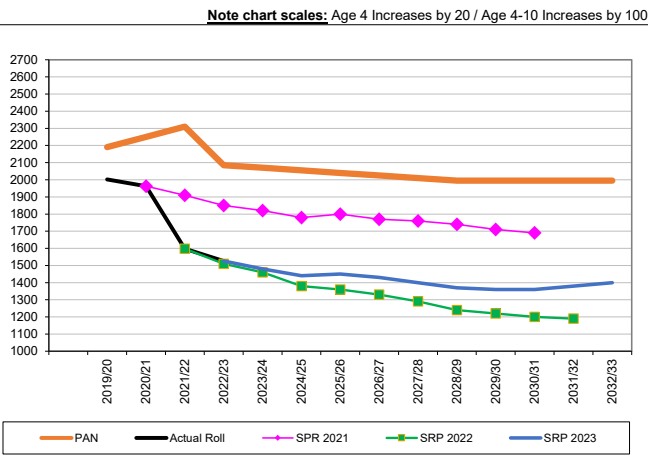
GLA Forecast: children aged 4 years old/reception

PA4	PAN	Actual Roll	SPR 2021	SRP 2022	SRP 2023	No.		%	
						PAN	PAN		
2014/15	330	310				20	6.1%		
2015/16	390	372				18	4.6%		
2016/17	390	347				43	11.0%		
2017/18	390	319				71	18.2%		
2018/19	390	266				124	31.8%		
2019/20	330	278				52	15.8%		
2020/21	330	261	261			69	20.9%		
2021/22	270	228	260	228		42	16%		
2022/23	270	217	260	200	217	53	20%		
2023/24	270		260	210	210	60	22%		
2024/25	270		250	190	200	70	26%		
2025/26	270		250	180	200	70	26%		
2026/27	270		250	180	200	70	26%		
2027/28	270		250	180	190	80	30%		
2028/29	270		240	180	200	70	26%		
2029/30	270		240	180	210	60	22%		
2030/31	270		240	180	210	60	22%		
2031/32	270			180	210	60	33%		
2032/33	270				220	50	33%		



GLA Forecast: children aged 4 to 10 years old/reception to year 6

PA4	PAN	Actual Roll	SPR 2021	SRP 2022	SRP 2023	No. Surplus/Deficit		% Surplus/Deficit	
						PAN	PAN		
2014/15	2,310	2,185				125	5.4%		
2015/16	2,370	2,262				108	4.6%		
2016/17	2,430	2,259				171	7.0%		
2017/18	2,490	2,211				279	11.2%		
2018/19	2,550	2,129				421	16.5%		
2019/20	2,190	2,002				188	8.6%		
2020/21	2,250	1,963	1,963			287	12.8%		
2021/22	2,310	1,598	1,910	1,598		712	30.8%		
2022/23	2,085	1,526	1,850	1,510	1,526	559	27%		
2023/24	2,070		1,820	1,460	1,480	590	29%		
2024/25	2,055		1,780	1,380	1,440	615	30%		
2025/26	2,040		1,800	1,360	1,450	590	29%		
2026/27	2,025		1,770	1,330	1,430	595	29%		
2027/28	2,010		1,760	1,290	1,400	610	30%		
2028/29	1,995		1,740	1,240	1,370	625	31%		
2029/30	1,995		1,710	1,220	1,360	635	32%		
2030/31	1,995		1,690	1,200	1,360	635	32%		
2031/32	1,995			1,190	1,380	615	31%		
2032/33	1,995				1,400	595	30%		



Camden Planning Area 5 (South of Euston Road) GLA School Roll Projections: Primary Age Forecasts

Appendix B, Table 7F
2022/23 Permanent Places (-15): -15 Argyle

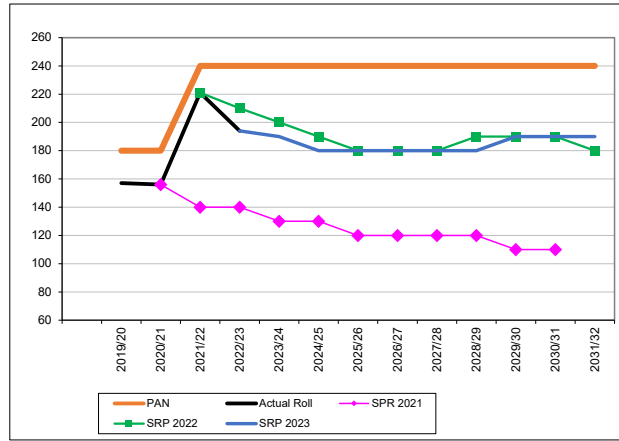
SRP = School Roll Projections from GLA

PAN: (Planned Admission Number) based on September.
Actual School Rolls: based on children attending by national curriculum year group from the January DfE School Census.

Forecasts SRP = GLA school roll forecasts should be treated with caution, estimates change/not actuals, therefore rounded nearest 10 to avoid misinterpretation.

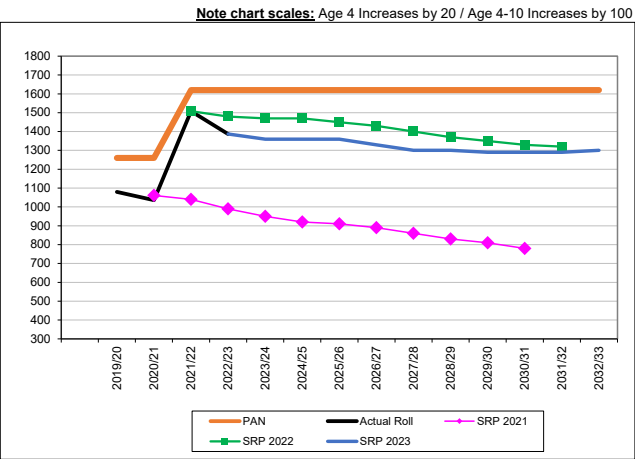
GLA Forecast: children aged 4 years old/reception

PA5	PAN	Actual Roll	SRP 2021	SRP 2022	SRP 2023	No. Surplus/Deficit		% Surplus/Deficit	
						PAN	PAN	PAN	PAN
2014/15	180	177				3	1.7%		
2015/16	180	176				4	2.2%		
2016/17	180	179				1	0.6%		
2017/18	180	163				17	9.4%		
2018/19	180	145				35	19.4%		
2019/20	180	157				23	12.8%		
2020/21	180	156	156			24	13.3%		
2021/22	240	221	140	221		19	8%		
2022/23	240	194	140	210	194	46	19%		
2023/24	240		130	200	190	50	21%		
2024/25	240		130	190	180	60	25%		
2025/26	240		120	180	180	60	25%		
2026/27	240		120	180	180	60	25%		
2027/28	240		120	180	180	60	25%		
2028/29	240		120	190	180	60	25%		
2029/30	240		110	190	190	50	21%		
2030/31	240		110	190	190	50	21%		
2031/32	240			180	190	50	23%		
2032/33	240				190	50	23%		



GLA Forecast: children aged 4 to 10 years old/reception to year 6

PA5	PAN	Actual Roll	SRP 2021	SRP 2022	SRP 2023	No. Surplus/Deficit		% Surplus/Deficit	
						PAN	PAN	PAN	PAN
2014/15	1,260	1,186				74	5.9%		
2015/16	1,260	1,188				72	5.7%		
2016/17	1,260	1,163				97	7.7%		
2017/18	1,260	1,114				146	11.6%		
2018/19	1,260	1,077				183	14.5%		
2019/20	1,260	1,080				180	14.3%		
2020/21	1,260	1,036	1,061			224	17.8%		
2021/22	1,620	1,508	1,040	1,508		1620	100%		
2022/23	1,620	1,387	990	1,480	1,387	233	14%		
2023/24	1,620		950	1,470	1,360	260	16%		
2024/25	1,620		920	1,470	1,360	260	16%		
2025/26	1,620		910	1,450	1,360	260	16%		
2026/27	1,620		890	1,430	1,330	290	18%		
2027/28	1,620		860	1,400	1,300	320	20%		
2028/29	1,620		830	1,370	1,300	320	20%		
2029/30	1,620		810	1,350	1,290	330	20%		
2030/31	1,620		780	1,330	1,290	330	20%		
2031/32	1,620			1,320	1,290	330	18%		
2032/33	1,620				1,300	320	18%		



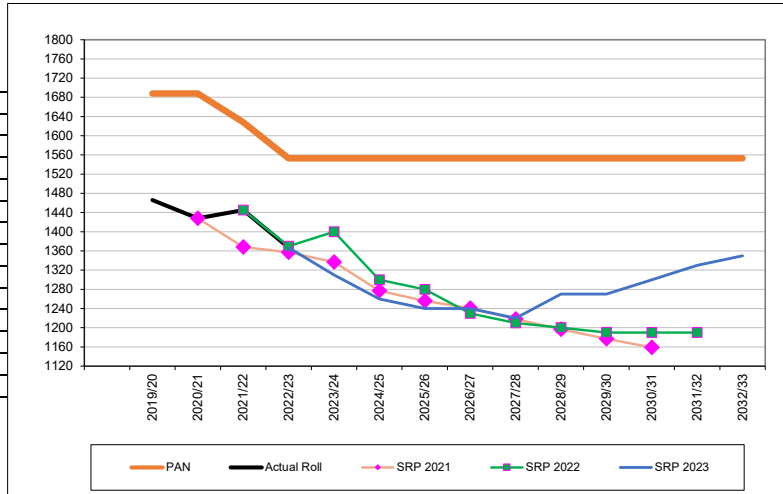
Camden Borough GLA School Roll Projections: Primary Age Forecasts

SRP = School Roll Projections received from GLA
Actuals = PAN: (Planned Admission Number) based on September. Actual School Rolls: based on children attending national curriculum year group in January DfE School Census.
Forecasts SRP = GLA school roll forecasts should be treated with caution, estimates are likely to change and are not actuals, therefore are rounded to nearest 10 to avoid misinterpretation.

Appendix B, Table 7G
2019/20 CLOSURE Permanent Places (-60): -60 All year groups St Aloysius (PA4)
2019/20 Temporary Capping Not Shown (-60): -30 Carlton (PA2) & -30 Rhyl (PA3)
2021/22 CLOSURE Permanent Places (-60): -60 All years Carlton (PA2)
2022/23 CLOSURE Permanent Places (-30): -30 All years St Michael's (PA4)
2022/23 Permanent Places (-45): -15 St Dominic's (PA2) & -15 Netley (PA4) & -15 Argyle (PA5)

GLA Forecast: children aged 4 years old/reception

Borough	PAN	Actual Roll	SRP 2020	SRP 2021	SRP 2022	SRP 2023	No. Surplus/Deficit	
							PAN	% PAN
2014/15	1,718	1,648					70	4.1%
2015/16	1,776	1,714					62	3.5%
2016/17	1,777	1,595					182	10.2%
2017/18	1,748	1,534					214	12.2%
2018/19	1,748	1,456					292	16.7%
2019/20	1,688	1,466	1,466				222	13.2%
2020/21	1,688	1,428	1,475	1,428			260	15.4%
2021/22	1,628	1,445	1,432	1,368	1,445		183	11%
2022/23	1,553	1,367	1,373	1,357	1,370	1,367	186	12%
2023/24	1,553		1,367	1,337	1,400	1,310	243	16%
2024/25	1,553		1,344	1,277	1,300	1,260	293	19%
2025/26	1,553		1,336	1,256	1,280	1,240	313	20%
2026/27	1,553		1,335	1,241	1,230	1,240	313	20%
2027/28	1,553		1,342	1,218	1,210	1,220	333	21%
2028/29	1,553		1,348	1,197	1,200	1,270	283	18%
2029/30	1,553		1,365	1,177	1,190	1,270	283	18%
2030/31	1,553			1,159	1,190	1,300	253	16%
2031/32	1,553				1,190	1,330	223	14%
2032/33	1,553					1,350	203	13%



GLA Forecast: children aged 4 to 10 years old/reception to year 6

Borough	PAN	Actual Roll	SRP 2020	SRP 2021	SRP 2022	SRP 2023	No. Surplus/Deficit	
							PAN	% PAN
2014/15	11,438	10,881					557	4.9%
2015/16	11,608	11,066					542	4.7%
2016/17	11,789	11,079					710	6.0%
2017/18	11,968	10,932					1,036	8.7%
2018/19	12,117	10,757					1,360	11.2%
2019/20	11,786	10,518	10,518				1,268	10.8%
2020/21	11,845	10,212	10,391	10,212			1,633	13.8%
2021/22	11,454	10,105	10,193	9,829	10,105		1,349	12%
2022/23	11,170	9,734	9,916	9,603	9,850	9,734	1,436	13%
2023/24	11,096		9,714	9,439	9,710	9,545	1,551	14%
2024/25	11,051		9,562	9,277	9,540	9,367	1,684	15%
2025/26	11,006		9,453	9,149	9,380	9,191	1,815	16%
2026/27	10,961		9,350	8,966	9,160	8,975	1,986	18%
2027/28	10,916		9,261	8,776	8,900	8,739	2,177	20%
2028/29	10,871		9,212	8,577	8,650	8,554	2,317	21%
2029/30	10,871		9,230	8,377	8,470	8,511	2,360	22%
2030/31	10,871			8,196	8,290	8,518	2,353	22%
2031/32	10,871				8,180	8,594	2,277	25%
2032/33	10,871					8,702	2,169	25%

