

Camden Borough GLA School Roll Projections Roll Projections: Forecasts of Secondary Age Children

SRP = School Roll Projections received from GLA

Actuals = PAN: (Planned Admission Number) based on September.

Actual School Rolls: children attending by national curriculum year, January DfE School Census

Forecasts SRP = GLA school roll forecasts should be treated with caution, estimates change/not actuals, therefore rounded to nearest 10 to avoid misinterpretation.

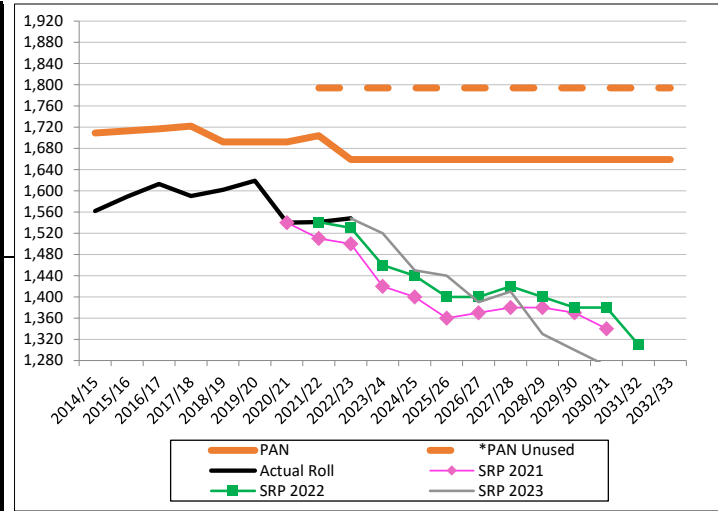
2018/19 Permanent Places (-30): Haverstock from Y7

2020/21 Permanent Places (+12): UCL Academy from Y7

2022/23 Permanent Places (-45): Haverstock from Y7

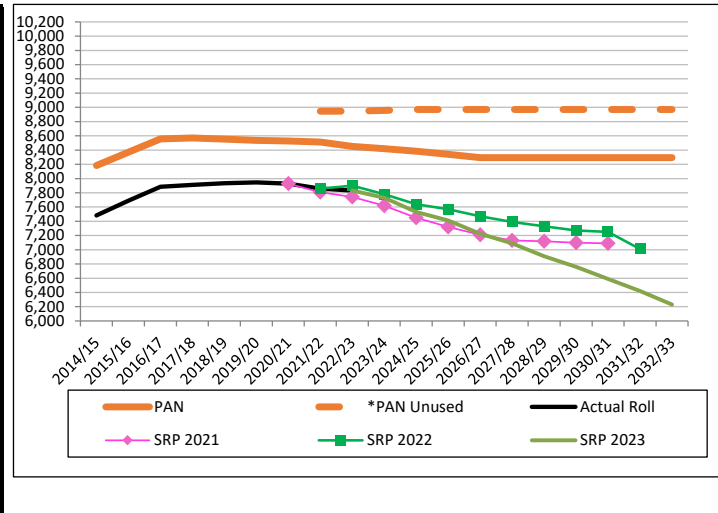
GLA Forecast: children aged 11 years old (year 7)

Borough	PAN	*PAN Unused	Actual Roll	SRP 2020	SRP 2021	SRP 2022	SRP 2023	No. Surplus/Deficit		% Surplus/Deficit	
								PAN	*PAN Unused	PAN	*PAN Unused
2014/15	1,709		1,562					147		8.6%	
2015/16	1,713		1,589					124		7.2%	
2016/17	1,717		1,613					104		6.1%	
2017/18	1,722		1,590					132		7.7%	
2018/19	1,692		1,602					90		5.3%	
2019/20	1,692		1,619	1,619				73		4.3%	
2020/21	1,692		1,540	1,610	1,540			152		9.0%	
2021/22	1,704	1,794	1,541	1,600	1,510	1,541		163		9.6%	
2022/23	1,659	1,794	1,548	1,600	1,500	1,530	1,548	111	246	7%	16%
2023/24	1,659	1,794		1,550	1,420	1,460	1,520	139	274	8%	15%
2024/25	1,659	1,794		1,550	1,400	1,440	1,450	209	344	13%	19%
2025/26	1,659	1,794		1,540	1,360	1,400	1,440	219	354	13%	20%
2026/27	1,659	1,794		1,540	1,370	1,400	1,390	269	404	16%	23%
2027/28	1,659	1,794		1,550	1,380	1,420	1,410	249	384	15%	21%
2028/29	1,659	1,794		1,530	1,380	1,400	1,330	329	464	20%	26%
2029/30	1,659	1,794		1,500	1,370	1,380	1,300	359	494	22%	28%
2030/31	1,659	1,794			1,340	1,380	1,270	389	524	23%	29%
2031/32	1,659	1,794				1,310	1,220	439	574	26%	32%
2032/33	1,659	1,794					1,200	459	594	21%	27%



GLA Forecast: children aged 11 to 15 years old (years 7 to 11)

Borough	PAN	*PAN Unused	Actual Roll	SRP 2020	SRP 2021	SRP 2022	SRP 2023	No. Surplus/Deficit		% Surplus/Deficit	
								PAN	*PAN Unused	PAN	*PAN Unused
2014/15	8,183		7,482					701		8.6%	
2015/16	8,369		7,690					679		8.1%	
2016/17	8,557		7,886					671		7.8%	
2017/18	8,570		7,910					660		7.7%	
2018/19	8,553		7,935					618		7.2%	
2019/20	8,536		7,946	7,946				590		6.9%	
2020/21	8,527		7,927	7,990	7,927			600		7.0%	
2021/22	8,514	8,946	7,858	7,920	7,810	7,858		656		7.7%	
2022/23	8,451	8,946	7,832	7,920	7,740	7,900	7,832	619		7%	
2023/24	8,418	8,958		7,880	7,620	7,780	7,730	688	1,228	8%	14%
2024/25	8,385	8,970		7,810	7,450	7,640	7,530	855	1,440	10%	16%
2025/26	8,340	8,970		7,750	7,320	7,570	7,410	930	1,560	11%	17%
2026/27	8,295	8,970		7,680	7,210	7,470	7,223	1,072	1,747	13%	19%
2027/28	8,295	8,970		7,640	7,130	7,390	7,090	1,205	1,880	15%	21%
2028/29	8,295	8,970		7,630	7,120	7,330	6,910	1,385	2,060	17%	23%
2029/30	8,295	8,970		7,590	7,100	7,270	6,760	1,535	2,210	19%	25%
2030/31	8,295	8,970			7,090	7,250	6,590	1,705	2,380	21%	27%
2031/32	8,295	8,970				7,010	6,420	1,875	2,550	23%	28%
2032/33	8,295	8,970					6,230	2,065	2,740	15%	22%



Secondary Roll by Year Group & Total % Percentage Capacity Full: January 2023 (2022/23)
Appendix C: Table 1A

School Name	PAN	National Curriculum Year Group							Total Roll
		7	8	9	10	11	12	13	
Acland Burghley	182	191	182	168	186	179	124	133	1,163
Camden School for Girls	120	120	120	120	121	116	229	221	1,047
Hampstead	210	209	208	209	209	198	157	129	1,319
Haverstock #	180	120	122	148	170	161	155	106	982
La Sainte Union	180	100	76	97	144	152	134	114	817
Maria Fidelis	150	145	147	142	134	138	75	51	832
Parliament Hill	180	179	178	180	178	176	197	161	1,249
Regent High #	180	181	203	157	180	183	94	81	1,079
UCL Academy	192	181	185	182	176	171	139	137	1,171
William Ellis	130	122	125	109	128	126	184	110	904
All Camden Secondary Schools	1,704	1,548	1,546	1,512	1,626	1,600	1,488	1,243	10,563
% Capacity Full		91%	91%	89%	94%	93%			
Number of Unfilled School Places		156	146	180	96	117			

Source: January 2023 DfE School Census / % capacity full is based on the admission number from original year of entry / PAN - Planned Admission Number

Numbers and % percentages are clearly illustrated / # Permanently agreed unused capacity at Regent High 2FE and Haverstock 1FE is not included

Secondary Year 7 and Year 7 to 11 Trend 2018/19 to 2022/23: Admission Number, Number on Roll, Number of Unfilled Places, Percentage % of Unfilled Places

Appendix C: Table 1B

School Name	Admission Number					Number on Roll in Y7					Number Unfilled Y7 Places					Percentage Unfilled Y7 Places %				
	18/19	19/20	20/21	21/22	22/23	18/19	19/20	20/21	21/22	22/23	18/19	19/20	20/21	21/22	22/23	18/19	19/20	20/21	21/22	22/23
Acland Burghley	182	182	182	182	182	185	198	183	194	191	-3	-16	-1	-12	-9	-1.6%	-8.8%	-0.5%	-6.6%	-4.9%
Camden School for Girls	120	120	120	120	120	120	120	119	120	120	0	0	1	0	0	0.0%	0.0%	0.8%	0.0%	0.0%
Hampstead	210	210	210	210	210	211	205	207	208	209	-1	5	3	2	1	-0.5%	2.4%	1.4%	1.0%	0.5%
Haverstock	180	180	180	180	180	114	133	124	122	120	66	47	56	58	60	36.7%	26.1%	31.1%	32.2%	33.3%
La Sainte Union	180	180	180	180	180	170	162	124	87	100	10	18	56	93	80	5.6%	10.0%	31.1%	51.7%	44.4%
Maria Fidelis	150	150	150	150	150	135	138	147	150	145	15	12	3	0	5	10.0%	8.0%	2.0%	0.0%	3.3%
Parliament Hill	180	180	180	180	180	183	179	180	177	179	-3	1	0	3	1	-1.7%	0.6%	0.0%	1.7%	0.6%
Regent High	180	180	180	180	180	176	177	154	178	181	4	3	26	2	-1	2.2%	1.7%	14.4%	1.1%	-0.6%
UCL Academy	180	180	192	192	192	179	179	193	179	181	1	1	-1	13	11	0.6%	0.6%	-0.5%	6.8%	5.7%
William Ellis	130	130	130	130	130	129	128	109	126	122	1	2	21	4	8	0.8%	1.5%	16.2%	3.1%	6.2%
Camden Secondary Total	1,692	1,692	1,704	1,704	1,704	1,602	1,619	1,540	1,541	1,548	90	73	164	163	156	5.3%	4.3%	9.6%	9.6%	9.2%

School Name	Admission Number					Number on Roll in Y7-11					Number Unfilled Y7-11 Places					Percentage Unfilled Y7-11 Places %				
	18/19	19/20	20/21	21/22	22/23	18/19	19/20	20/21	21/22	22/23	18/19	19/20	20/21	21/22	22/23	18/19	19/20	20/21	21/22	22/23
Acland Burghley	910	910	910	910	910	784	847	904	896	906	126	63	6	14	4	13.8%	6.9%	0.7%	1.5%	0.4%
Camden School for Girls	588	596	600	600	600	588	598	592	597	597	0	-2	8	3	3	0.0%	-0.3%	1.3%	0.5%	0.5%
Hampstead	1,050	1,050	1,050	1,050	1,050	1,029	1,029	1,031	1,019	1,033	21	21	19	31	17	2.0%	2.0%	1.8%	3.0%	1.6%
Haverstock	1,020	990	960	930	930	775	732	695	751	721	245	258	265	179	209	24.0%	26.1%	27.6%	19.2%	22.5%
La Sainte Union	900	900	900	900	900	867	827	782	671	569	33	73	118	229	331	3.7%	8.1%	13.1%	25.4%	36.8%
Maria Fidelis	750	750	750	750	750	642	676	678	691	706	108	74	72	59	44	14.4%	9.9%	9.6%	7.9%	5.9%
Parliament Hill	900	900	900	900	900	899	889	886	871	891	1	11	14	29	9	0.1%	1.2%	1.6%	3.2%	1.0%
Regent High	900	900	900	900	900	875	870	876	864	904	25	30	24	36	-4	2.8%	3.3%	2.7%	4.0%	-0.4%
UCL Academy	900	900	924	924	924	872	861	879	891	895	28	39	45	33	29	3.1%	4.3%	4.9%	3.6%	3.1%
William Ellis	635	640	645	650	650	604	617	604	608	610	31	23	41	42	40	4.9%	3.6%	6.4%	6.5%	6.2%
Camden Secondary Total	8,553	8,536	8,539	8,514	8,514	7,935	7,946	7,927	7,859	7,832	618	590	612	655	682	7.2%	6.9%	7.2%	7.7%	8.0%

Information

Year 7 and Year 7-11 shown (where indicated) for all Camden schools, Admission Numbers from Admission School Booklets/Schools

Actual School Rolls based on DfE January School Census (main count) in all years

Numbers and % percentages are clearly illustrated / # Unused capacity permanently agreed at Regent High 2FE and Haverstock 1FE are **not included**

Key to Conditional Formatting (% unfilled places) - numbers are rounded which may appear to affect some conditional formatting - the rounding may not be fully visible

The Department for Education (DfE) provides guidance suggesting that for the efficient operation of the school system and to give space for the expression of parental preference, authorities should target 5% surplus within their area, conditional formatting reflects this.

GREEN - surplus school places equal or under 5.0%
AMBER - surplus school places between 5.01% and 10.0%
RED - surplus school places equal or over 10.01%

Secondary School Net Capacity 2023

Appendix C: Table 2A

DfE No	School	As At MAY NOR*	Net Capacity 2023	Net Capacity % Surplus MAY
4285	Acland Burghley	1,163	1,381	15.79%
4611	Camden School for Girls	1,047	1,134	7.67%
4275	Hampstead	1,319	1,495	11.77%
4104	Haverstock	982	1,224	19.77%
5401	La Sainte Union	817	1,185	31.05%
4652	Maria Fidelis	832	1,178	29.37%
4166	Parliament Hill	1,249	1,256	0.56%
4196	Regent High	1,079	1,467	26.45%
4000	UCL Academy	1,171	1,150	-1.83%
4688	William Ellis	904	903	-0.11%
Camden Secondary Total		10,507	12,373	15.08%

Information

School Net Capacity 2023 provided by Camden Property and Contracts

*Includes actual numbers on roll (NOR) from May 2023 provisional DfE School Census (Y7-post 16), representing the 2022/23 cohort

Note: Capacity figures for schools can change to accommodate new additions/re-organising of space.

Secondary Actual Net Capacity Surplus Trend 2019 to 2023

Appendix C: Table 2B

Camden Total	Percentage % Actual Net Capacity Surplus					Numbers 2023		
	2019	2020	2021	2022	2023	*Actual Pupils NOR MAY	Net Capacity	Actual Surplus NOR/NetCap
Camden Secondary Total	15.6	16.3	15.2	15.3	15.8	10,507	12,373	1,866

Information

School Net Capacity 2023 provided by Camden Property and Contracts

*Includes actual numbers on roll (NOR) from May 2023 provisional DfE School Census (Y7-post 16), representing the 2021/22 cohort

Percentage % net capacity surplus is based on May DfE School Census 2019, 2021, 2022, 2023

Covid: DfE SCAP & May DfE School Census CANCELLED 2020, Net Capacity surplus reported using mix of existing and updated information & January DfE School Census

Note: Capacity figures for schools can change to accommodate new additions/re-organising of space.

2019/20 to 2021/22 Year 7 Secondary Transfer Offer Day - Historic Detail

Appendix C: Table 3

Offered School/Borough	PAN	Number									Percentage %		
		Camden Resident			Non-Resident			All Offers			Camden Resident		
		2020/21	2021/22	2022/23	2020/21	2021/22	2022/23	2020/21	2021/22	2022/23	2020/21	2021/22	2022/23
Acland Burghley	182	100	120	99	78	62	83	178	182	182	56	54	54
Camden School for (Girls)	120	101	92	89	19	28	31	120	120	120	84	74	74
Hampstead	210	71	67	80	139	143	108	210	210	188	34	38	43
Haverstock	180	174	163	114	6	15	11	180	178	125	97	63	91
La Sainte Union Convent (Girls)	180	33	90	25	110	61	45	143	151	70	23	14	36
Maria Fidelis Convent	150	109	110	76	41	40	59	150	150	135	73	51	56
Parliament Hill (Girls)	180	132	119	125	48	61	55	180	180	180	73	69	69
Regent High	180	157	164	156	23	16	24	180	180	180	87	87	87
UCL Academy	192	168	171	150	24	21	42	192	192	192	88	78	78
William Ellis (Boys)	130	99	97	94	31	33	36	130	130	130	76	72	72
Camden Offer All Secondary	1,704	1,144	1,193	1,008	519	480	494	1,663	1,673	1,502	69	59	67
Other London Borough School		390	381	398				390	381	398	100	100	100
Local Authority School Outside London		4	9	21				4	9	21	100	100	100
Other Local Authority Offer		394	390	419	0	0	0	394	390	419	100	100	100
No Offer / Other LA School*		35	0	0	954	899	983	989	899	983	4	0	0
Total Applicants		1,573	1,583	1,427	1,473	1,379	1,477	3,046	2,962	2,904	52	53	49

Source: Admissions 'Year 7 Secondary Offer at beginning of March specified years', numbers are shown unless otherwise stated / PAN = Planned Admission Number

*Note for 'unplaced' non-residents, Camden is not responsible for finding places, these children may have been allocated a school place by their 'home' borough

*Note late and SEN (refusing a school place) applicants are included in these figures

Camden Secondary Years 7 to 11: Pupil Borough of Residence

Appendix C: Table 4

Secondary Year 7 to 11 Borough of Residence	2019		2020		2021		2022		2023	
	No	%	No	%	No	%	No	%	No	%
Camden	5,111	64%	5,102	64%	5,115	65%	5,125	65%	5,286	66%
Islington	1,057	13%	1,136	14%	1,172	15%	1,176	15%	1,215	15%
Brent	630	8%	606	8%	576	7%	577	7%	553	7%
Barnet	407	5%	382	5%	381	5%	366	5%	379	5%
Haringey	214	3%	222	3%	211	3%	201	3%	166	2%
Westminster	204	3%	205	3%	196	2%	181	2%	182	2%
Hackney	136	2%	121	2%	102	1%	88	1%	82	1%
Enfield	59	1%	52	1%	40	1%	28	0%	20	0%
Waltham Forest	35	0%	27	0%	37	0%	35	0%	29	0%
Tower Hamlets	15	0%	14	0%	11	0%	14	0%	11	0%
Southwark	13	0%	13	0%	7	0%	4	0%	8	0%
Other London Borough	49	1%	51	1%	69	1%	52	1%	63	1%
Outside London	5	0%	15	0%	10	0%	12	0%	11	0%
Camden Secondary Total	7,910	100%	7,935	100%	7,946	100%	7,859	100%	8,005	100%

Source: DfE January School Census, home borough of children in Camden schools

Camden Residents in Other Borough Secondary School Provision: 2019 to 2023

Appendix C: Table 5

LA no	Borough School	National Curriculum Years 7 to 11 (Number)					National Curriculum Years 7 to 11 (Percentage)				
		2019	2020	2021	2022	2023	2019	2020	2021	2022	2023
302	Barnet	173	179	179	188	108	9%	9%	9%	10%	6%
303	Bexley	0	0	0	0	1	0%	0%	0%	0%	0%
304	Brent	90	94	91	94	113	5%	5%	5%	5%	6%
305	Bromley	0	<5	<5	0	0	0%	0%	0%	0%	0%
306	Croydon	0	<5	0	0	<5	0%	0%	0%	0%	0%
307	Ealing	<5	<5	<5	9	5	0%	0%	0%	0%	0%
308	Enfield	16	8	6	6	2	1%	0%	0%	0%	0%
203	Greenwich	<5	0	0	<5	2	0%	0%	0%	0%	0%
204	Hackney	14	11	10	9	6	1%	1%	1%	0%	0%
205	H&F	35	34	31	18	41	2%	2%	2%	1%	2%
309	Haringey	29	30	23	18	13	1%	2%	1%	1%	1%
310	Harrow	8	8	<5	<5	1	0%	0%	0%	0%	0%
311	Havering	0	0	<5	<5	0	0%	0%	0%	0%	0%
919	Hertfordshire	6	16	12	16	15	0%	1%	1%	1%	1%
312	Hillingdon		0		<5	4		0%		0%	0%
313	Hounslow	6	<5	<5	<5		0%	0%	0%	0%	
206	Islington	575	557	526	479	454	30%	29%	27%	25%	24%
207	K&C	61	60	60	76	70	3%	3%	3%	4%	4%
314	Kingston	<5	0	0		0	0%	0%	0%		0%
208	Lambeth	44	31	17	13	11	2%	2%	1%	1%	1%
209	Lewisham	<5	<5	0	0	3	0%	0%	0%	0%	0%
315	Merton		0	<5	0	1		0%	0%	0%	0%
316	Newham	6	10	9	<5	6	0%	1%	0%	0%	0%
317	Redbridge			<5	<5	1			0%	0%	0%
318	Richmond	0	0	0	0	0	0%	0%	0%	0%	0%
210	Southwark	17	0	11	14	11	1%	0%	1%	1%	1%
319	Sutton	<5	<5	<5	<5	0	0%	0%	0%	0%	0%
211	Tower Hamlets		<5	<5	<5	5		0%	0%	0%	0%
320	Waltham Forest	<5	<5	<5	<5	3	0%	0%	0%	0%	0%
212	Wandsworth	<5	<5	0	0	0	0%	0%	0%	0%	0%
213	Westminster	849	888	940	982	1053	44%	46%	49%	50%	55%
Camden Residents Other Borough Total		1,941	1,947	1,936	1,951	1,929	100%	100%	100%	100%	100%

Source: **January** 2019-23 DfE School Census returns and data sharing summary numbers with neighbouring boroughs

Blanks indicate boroughs' not supplying resident data / <5 indicates numbers less than or equal to 5