

Title: Community Safety Report

Information/Discussion Report – Discussion

Recommendations: The DMC is asked to note the report and/or other recommendation.

Report Summary: This report provides an overview of the work of the Community Safety Service throughout 2023.

1. Anti-Social Behaviour (ASB) Overview

- 1.1. ASB and drug related problems remain the number one issue reported to us by our residents, and we have been working closely with a number of internal and external partners to tackle these issues. Joint walkabouts with housing colleagues, the Metropolitan Police Service (Met) and other stakeholders continue to help us identify and act on priority ASB concerns, with feedback shared in community meetings such as the Tenants and Residents Associations Meetings, District Management Committees and Ward Safer Neighbourhood Panels.
- 1.2. In July, the Council initiated an intensive engagement programme, reaching out to 22,000 tenanted homes. As part of the programme the Council is hosting Estate Action Days, aiming to bring us closer to our residents and enable us to work with them to identify creative solutions to issues on their estates and neighbourhoods. Community Safety has been represented across all 15 Estate Action Days to date.
- 1.3. A consistent theme across the feedback received so far indicates that ASB is a key concern, particularly related to drug dealing in hidden pockets across the estates: out of sight of patrols and away from CCTV coverage. Residents have told officers that people from outside the estate are finding ways to access and are engaging in ASB. Further engagement with residents has been planned on those estates visited to develop Estate Plans to work with residents to develop positive and creative responses to the issues raised.
- 1.4. In response to drug-related concerns, we are supporting the delivery of a new Combatting Drugs Partnership in Camden. This will be an annual meeting of a joint

Health and Wellbeing Board and the Community Safety Partnership Board and is a mandated requirement to ensure the effective allocation of resources made available via the Supplementary Substance Misuse Treatment and Recovery (SSMTR) Grant and Project Adder funding by provided to the Met. The delivery of this work is overseen by the Camden Drugs, Alcohol, and Community Safety working group comprised of Council services and external stakeholders. Performance will be tracked by the national metrics laid out in the government's national drugs strategy as well as the creation of a Local Outcomes Framework that will be tailored to Camden.

2. Anti-Social Behaviour Review

2.1. The ASB review was created to tackle the challenges related to the management of ASB. Examining case studies highlighted opportunities for improving current systems for handling complex or challenging cases involving ASB and mental health. The data also indicated that Housing Estates are disproportionately affected by ASB. The review's main areas of focus include:

- Conducting a Population Health Needs Assessment to facilitate the development of a preventative approach to reduce ASB.
- Establishing a Joint Protocol in collaboration with C&I Mental Health Trust, with a focus on guiding the management of cases where metal health is a contributing factor.
- Conducting a comprehensive Systems Review to evaluate the effectiveness of the existing approaches of the Council and its partners in reducing ASB.

3. ASB Taskforce

3.1. To support the Council to address the challenges and disproportionality, a dedicated ASB taskforce will be established during a five-month trial period from November 2023 until March 2024. Adult Safeguarding, Mental Health and Family Support services will play a crucial role in supporting the management of complex cases and ASB reduction activity during the trial period.

4. Responsive Security Patrol

4.1. The Council's five vehicle Responsive Security Patrol (RSP) is available for residents to call out 12 hours a day, 7 days a week, from 4pm to 4am. The main purpose is to act as a deterrent and to detect and disrupt ASB on housing land. The RSP can be called out for any type of ASB, and residents can call them out without sharing their personal details if they want.

4.2. So far this year they have carried out over 40,980 patrols. Nearly 20% of these are targeted patrols to proactively disrupt ASB, about 5% are residents calls with the RSP dealing with more than 2,027 residents call outs so far this year. As well as responding to resident's call outs, the RSP carry out targeted vehicle and foot patrols

at the request of Community Safety, Housing Managers and the Police. They may also carry out welfare or tenancy checks and form part of the Council's emergency response. They can be contacted on 020 7974 4444 asking for the Responsive Security Patrol or at RSP@camden.gov.uk.

- 4.3. All RSP cars are fitted with GPS trackers that show in real-time where the vehicles are and keep a record of all the car's movements. The cars have in car CCTV fitted that records automatically and the RSP officers are equipped with body worn CCTV cameras that captures both audio and video. If there is a complaint about a patrol, then all of this data is downloaded and compared to the patrol logs, they submit. Management also carries out a "dip sampling" process where they select patrols at random and check all of this for accuracy.

5. CCTV

- 5.1. We have completed technical surveys on 49 of the 54 identified estates for the upgrade programme. The remaining 5 estates will be surveyed in the coming weeks. There has been CCTV installation on 12 estates (22% of the total project) is complete, with another 4 estates (7%) in various stages of completion. We're set to begin work on an additional 2 estates (4%), bringing our progress to about 30% of the total project. Over 261 new high-definition CCTV cameras have been installed, accounting for approximately 37% of the estimated total. These cameras are highly regarded for their quality, especially at night.
- 5.2. Our initial goal was to complete most estates by the end of the calendar year, with a few complex ones carried over to the financial year's end. The current pace suggests around 50% completion by year-end, with the majority finalised by the financial year-end and the complex ones afterward. While progress is slightly slower than hoped, it remains steady, and the work's quality is excellent.
- 5.3. A document with more details about the upgrade (subject to change due to operational and technical reasons) has been published on the Council's website. It will be updated monthly and can be accessed here - [CCTV and Responsive Security Patrol \(RSP\) - Camden Council](#).

6. Metropolitan Police Partnership

Turnaround Plan

- 6.1. Baroness Casey's Review revealed the significant challenge the Met now faces in regaining trust and confidence in London's policing. The review uncovered issues like institutionalised behaviour, systemic racism, misogyny, and homophobia, emphasising the need for the Met to fully engage with communities across London/Camden.
- 6.2. The Council has been supporting the delivery of the New Met for London Turnaround Plan which offers an opportunity for the Met to re-engage and connect with local

communities. The plan outlines core policing activities to fulfil the Met's mission, focusing on nine priorities to delivery More Trust, Less Crime and High Standards. We have worked in partnership with the Met to promote the co-production of a localised Turnaround Plan with those who live, work, study, and visit Camden to ensure it is tailored to the needs of the Borough.

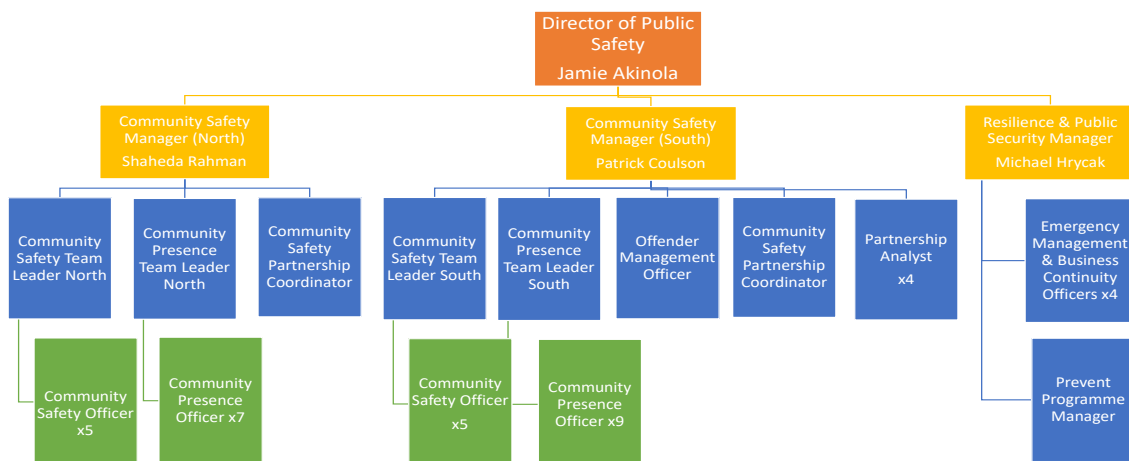
Violence Against Women and Girls

- 6.2. Women's safety is a key priority in the Met's seasonal plans, with dedicated patrols carried out in locations within the evening and night-time economy, including Christmas and New Year. They use Late-Night Levy funding for a Domestic Abuse Utility Vehicle and conduct licensing visits in partnership with Camden's Licensing Officers, enforcing the 'Ask for Angela' scheme. Non-uniformed officers have been patrolling both licensed premises and problematic locations to address misogynistic behaviour and prevent crimes against women and girls.
- 6.3. Project Vigilant is a pre-emptive policing operation which uses uniformed and non-uniformed officers to target violence against women and girls in evening and night-time economy venues, preventing violence displacement and identifying predatory behaviour. The Council supports this project with £85,000 in funding and keeps the Camden Safety Hub open until the early hours of the morning on operation nights to support delivery and provide additional signposting to vulnerable individuals.

Crime and ASB

- 6.4. Our Community Presence Officers are working closely with the Met on a proactive policing programme involving local businesses and officers from Neighbourhood and Town Centre Teams. This includes the 'Camden Day of Action' with targeted activities in Camden Town and the North of the Borough to address persistent ASB by issuing Community Protection Warnings (CPWs) and Community Protection Notices (CPNs).
- 6.5. 'Operation Midnight' is a joint operation between the Council, the Met's Integrated Offender Management, and Operation Pantera teams. It allocates additional resources to known Addresses of Concern (AOCs), enabling the execution of enforcement measures such as surveillance, search warrants, and arrests for cuckooing perpetrators.

7. Community Safety Service Structure



8. Contacting the Community Safety Service

8.1 If ASB is causing alarm or distress to you or the community where you live you should report this to Camden's Community Safety Service. You can do this by:

- Completing our [online form](#) to report antisocial behaviour.
- Phone: 020 7974 444 (9am to 5pm Monday to Friday). When on the telephone please go through them all until you are asked to hold and there will be a further submenu, then please choose option 6 for Community Safety.

8.2 If you're a Camden council tenant or leaseholder and the ASB is happening on a council estate between 4pm and 4am you can call the Responsive Security Patrol on 020 7974 4444 (everyday).

8.3 More information on how to contact Camden's Community Safety Service can be found on our website [here](#).

9. Contacting the Metropolitan Police Service

9.1 Information on how to find your local officer, get the latest crime statistics and advice, help the police with appeals for information, and find out what they're doing to tackle crime in your local area can be found on their website [here](#).

9.2 To contact the police for non-emergencies, please dial 101. For emergencies, please dial 999.

Report Ends