

15 Highgate Road - Licensing Plans

IMPORTANT: Licenseable activities can take place anywhere within the red line. The position of loose furniture and equipment is shown for diagrammatic purposes only. Firefighting equipment is indicated but may be moved subject to the fire risk assessment carried out under the Regulatory Reform (Fire Safety) Order 2005 or by agreement with the fire officer.

- KEY:**
- Ⓢ EMERGENCY LIGHT COMBINED FITTING-ALL NEW
 - ★ FLASHING BEACON
 - ☑ AREA TO BE COVERED BY A SMOKE/HEAT DETECTOR (LOCATION TO BE CONFIRMED BY ALARM CONSULTANT)
 - ☎ CALL POINT
 - Ⓜ ALARM PANEL
 - Ⓜ 30 MINUTE INTEGRITY/100 MINUTE INSULATION FIRE DOOR WITH SMOKE SEALS AND FITTED WITH A SELF-CLOSING DEVICE.
 - Ⓜ ILLUMINATED SIGN INDICATING FIRE EXIT
 - Ⓜ FIRE EXIT WITH PUSH BAR/PAD OPENING WITH SIGN

MEANS OF ESCAPE
Fire doors to be self-closing fire resisting and self-closing. Doors to satisfy BS476 Part 22:1987 and be FD30/30 standard. Doors providing means of escape should be fitted with illuminated signs and cold smoke seals.

FIRE ALARM
To integrate with provided building system. Symbols on plain readable signs to be covered, and actual locations of detector heads are to be advised by a specialist fire alarm consultant.

FIRE FIGHTING EQUIPMENT
All fire fighting equipment to be set so that the carry handles are located 5cm above bar level.

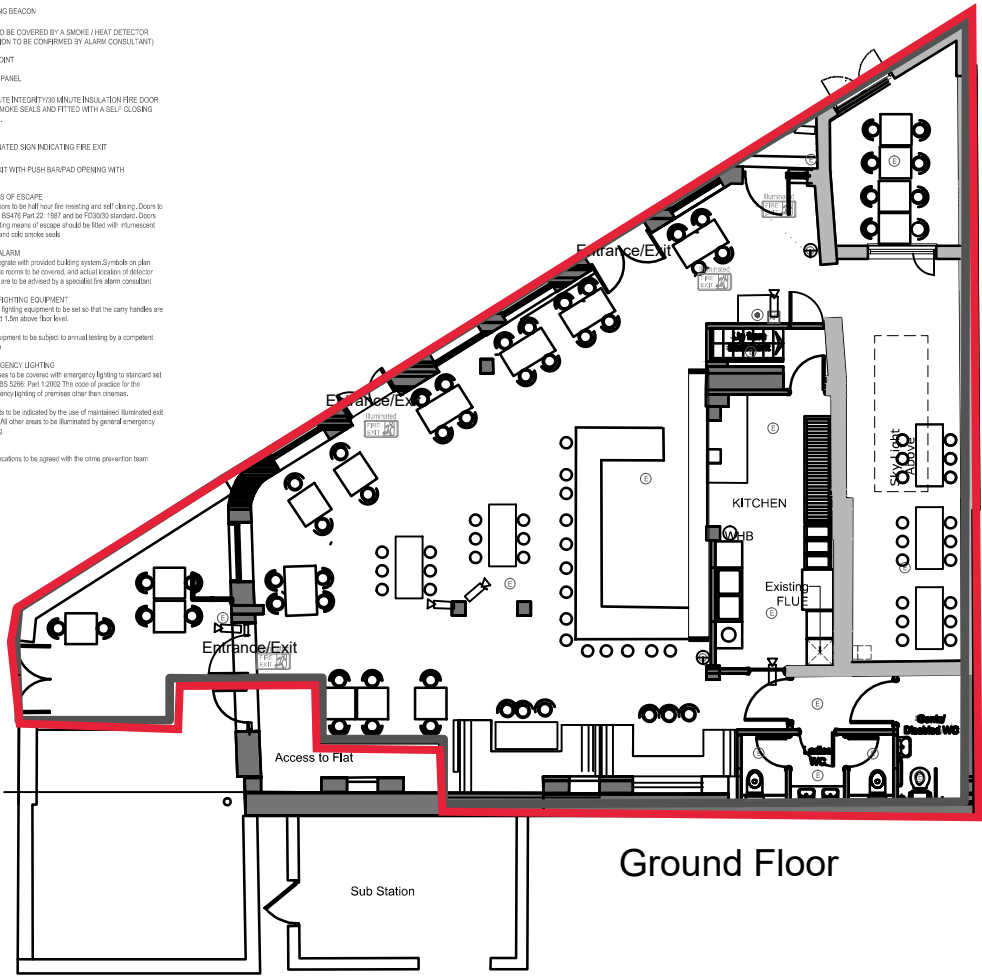
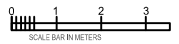
All equipment to be subject to annual testing by a competent person.

EMERGENCY LIGHTING
Premises to be covered with emergency lighting to standard set out in BS5266: Part 1:2002. The correct grades for the emergency lighting of premises other than cinemas.

All exits to be indicated by the use of maintained illuminated exit signs. All other areas to be illuminated by general emergency lighting.

CCTV
Cctv locations to be agreed with the crime prevention team.

- ☎ SOUNDER
- 📷 CCTV CAMERA



Ground Floor

IMPORTANT: Licenable activities can take place anywhere within the red line. The position of loose furniture and equipment is shown for diagrammatic purposes only. Firefighting equipment is indicated but may be moved subject to the fire risk assessment carried out under the Regulatory Reform (Fire Safety) Order 2005 or by agreement with the fire officer.

KEY:

- ① EMERGENCY LIGHT COMBINED FITTING-ALL NEW
- * FLASHING BEACON
- Ⓜ ASA TO BE COVERED BY A SMOKE/HEAT DETECTOR (LOCATION TO BE GOVERNED BY ALARM CONSULTANT)
- CALL POINT
- ALARM PANEL
- Ⓜ 30 MINUTE INTEGRITY/30 MINUTE INSULATION FIRE DOOR WITH SMOKE SEALS AND FITTED WITH A SELF CLOSING DEVICE.
- ILLUMINATED FIRE EXIT SIGN
ILLUMINATED SIGN INDICATING FIRE EXIT
- Ⓜ FIRE EXIT WITH PUSH BAR/PAD OPENING WITH SIGN

MEANS OF ESCAPE

Fire doors to be self-closing and self-latching. Doors to satisfy BS476 Part 22: 1987 and be FD30/S0 standard. Doors protecting means of escape should be fitted with intumescent strips and cold smoke seals.

FIRE ALARM

To integrate with provided building system. Symbols on plans indicate areas to be covered, and actual location of detector heads are to be advised by a specialist fire alarm consultant.

FIRE FIGHTING EQUIPMENT

All fire fighting equipment to be set so that the carry handles are located 1500 above floor level.

All equipment to be subject to annual testing by a competent person.

EMERGENCY LIGHTING

Premises to be covered with emergency lighting to standard set out in BS 5266 Part 1: 2002. The scope of practice for the emergency lighting of premises other than cinemas.

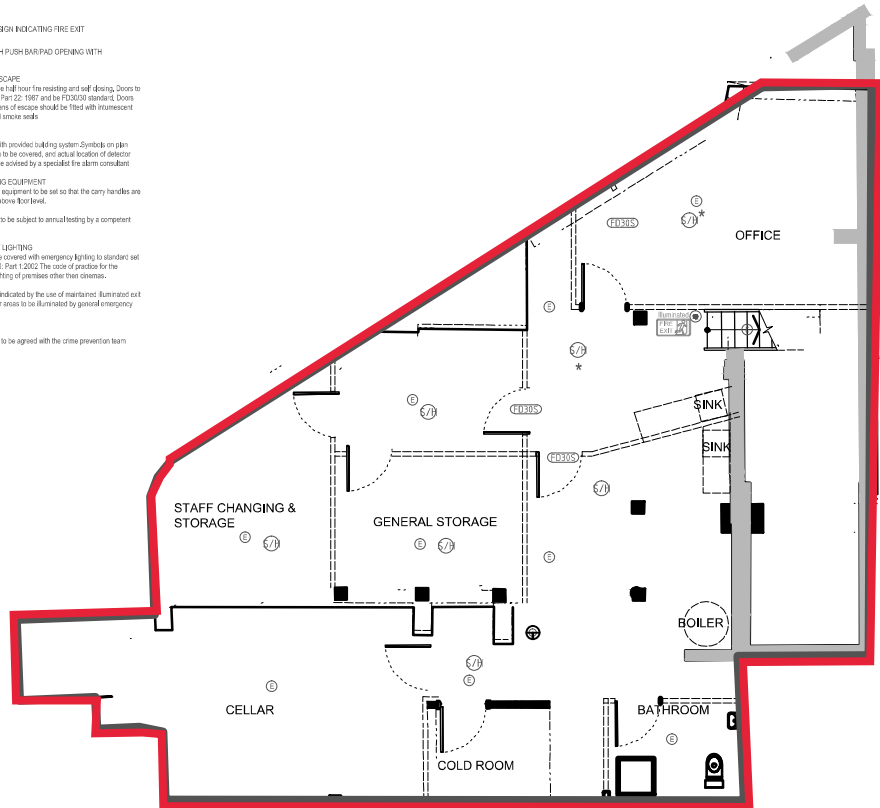
All exits to be indicated by the use of maintained illuminated exit signs. All other areas to be illuminated by general emergency lighting.

CCTV

CCTV locations to be agreed with the crime prevention team.

● SOUNDER

□ CCTV CAMERA



Basement Plan