

Primary Roll by Year Group & Total % Percentage Capacity Full: January 2024 (2023/24)

Appendix B: Table 1

	School Name	PAN	National Curriculum Year Group						Total Roll	
			R	1	2	3	4	5		6
Planning Area 1	Christ Church Hampstead NW3	28	28	28	28	23	25	26	27	185
	Emmanuel	30	30	30	30	29	31	30	30	210
	Fitzjohn's	30	30	30	30	26	30	30	29	205
	Hampstead Parochial (1FE Y6)	30	29	28	30	29	29	29	29	203
	Kingsgate (2FE Y6)	90	63	81	75	76	85	80	81	541
	New End	60	34	30	51	45	47	52	47	306
	St Eugene de Mazenod	30	26	29	30	30	29	29	23	196
	St Luke's Free School	15	16	11	15	14	13	13	16	98
	St Mary Kilburn	30	29	30	30	29	28	29	28	203
	West Hampstead	60	58	58	58	58	44	47	42	365
	Planning Area 1 Primary Schools	403	343	355	377	359	361	365	352	2,512
% Capacity Full		85%	88%	94%	89%	90%	91%	87%		
Number of Unfilled School Places		60	48	26	44	42	38	51		
Planning Area 2	Brecknock	60	28	34	42	37	57	34	29	261
	Brookfield	60	55	40	53	41	50	58	45	342
	Eleanor Palmer	30	30	30	31	30	30	30	29	210
	Kentish Town	30	30	30	29	30	28	29	30	206
	St Patrick	30	11	19	21	21	20	21	22	135
	Torriano	58	59	58	60	59	59	59	54	408
	Planning Area 2 Primary Schools	268	213	211	236	218	244	231	209	1,562
	% Capacity Full		79%	79%	88%	81%	91%	86%	78%	
	Number of Unfilled School Places		55	57	32	50	24	37	59	
	Planning Area 3	Abacus Belsize Free School	30	27	25	24	24	19	17	9
Fleet		30	29	29	29	29	27	30	30	203
Gospel Oak		60	60	56	60	57	60	62	56	411
Hawley		30	30	29	29	29	25	29	26	197
Holy Trinity & St Silas		30	30	30	30	28	30	30	30	208
Holy Trinity NW3		27	22	25	25	27	25	24	26	174
Primrose Hill		60	59	60	59	53	56	57	54	398
Rhyl		60	42	35	47	53	52	56	65	350
Rosary		45	35	42	40	45	35	40	43	280
St Dominic's		0								0
St Paul's		30	25	25	30	30	21	28	28	187
Planning Area 3 Primary Schools		402	359	356	373	375	350	373	367	2,553
% Capacity Full			89%	80%	83%	84%	78%	83%	82%	
Number of Unfilled School Places		43	46	29	27	52	29	35		
Planning Area 4	Christ Church NW1	30	23	26	27	23	32	21	30	182
	Edith Neville	30	26	30	26	28	20	25	30	185
	Netley	45	57	57	62	42	41	30	41	330
	Our Lady's	30	25	30	30	30	34	38	41	228
	Richard Cobden	60	52	55	60	53	53	38	58	369
	St Mary & St Pancras	30	21	20	27	26	27	24	31	176
	St Michael	0								0
	Planning Area 4 Primary Schools	225	204	218	232	202	207	176	231	1,470
% Capacity Full		91%	81%	86%	75%	77%	65%	86%		
Number of Unfilled School Places		21	7	-7	23	18	49	-6		
Planning Area 5	Argyle	45	43	37	44	54	34	31	30	273
	Christopher Hatton	30	30	30	29	31	30	24	29	203
	King's Cross Academy	60	50	48	51	53	43	51	51	347
	St Albans	30	7	10	18	14	18	15	21	103
	St George the Martyr	30	26	24	22	29	26	27	28	182
	St Josephs	30	15	21	18	20	28	23	26	151
	Planning Area 5 Primary Schools	225	171	170	182	201	179	171	185	1,259
% Capacity Full		76%	71%	76%	84%	75%	71%	77%		
Number of Unfilled School Places		54	55	43	24	46	54	40		
Total	All Camden Primary Schools	1,523	1,290	1,310	1,400	1,355	1,341	1,316	1,344	9,356
	% Capacity Full		85%	86%	83%	80%	79%	77%	78%	
	Number of Unfilled School Places		233	213	123	168	182	207	179	

Source: January 2024 DfE School Census / PAN - Planned Admission Number / PA - Planning Area / Numbers and % percentages are clearly illustrated

Percentage capacity full calculations are based on PAN: any permanently unused capacity or temporary capping is not included

Primary Reception Trend 2019/20 to 2023/24: Admission Number, Number on Roll, Unfilled Places, % Unfilled Places

Appendix B, Table 2A

School Name	Planned Admission Number					Number on Roll in Reception					Number Unfilled Reception Places					Percentage Unfilled Reception Places %				
	19/20	20/21	21/22	22/23	23/24	19/20	20/21	21/22	22/23	23/24	19/20	20/21	21/22	22/23	23/24	19/20	20/21	21/22	22/23	23/24
Christ Church NW3	28	28	28	28	28	28	28	28	28	28	0	0	0	0	0	0.0%	0.0%	0.0%	0.0%	0.0%
Emmanuel	30	30	30	30	30	30	28	30	29	30	0	2	0	1	0	0.0%	6.7%	0.0%	3.3%	0.0%
Fitzjohn's	30	30	30	30	30	29	30	29	30	30	1	0	1	0	0	3.3%	0.0%	3.3%	0.0%	0.0%
Hampstead Parochial	30	30	30	30	30	30	30	30	30	29	0	0	0	0	1	0.0%	0.0%	0.0%	0.0%	3.3%
Kingsgate	90	90	90	90	90	83	88	87	90	63	7	2	3	0	27	7.8%	2.2%	3.3%	0.0%	30.0%
New End	60	60	60	60	60	48	36	46	29	34	12	24	14	31	26	20.0%	40.0%	23.3%	51.7%	43.3%
St Eugene de Mazenod	30	30	30	30	30	30	30	30	30	26	0	0	0	0	4	0.0%	0.0%	0.0%	0.0%	13.3%
St Luke's	15	15	15	15	15	15	15	15	15	16	0	0	0	0	-1	0.0%	0.0%	0.0%	0.0%	-6.7%
St Mary's Kilburn	30	30	30	30	30	28	30	29	30	29	2	0	1	0	1	6.7%	0.0%	3.3%	0.0%	3.3%
West Hampstead	60	60	60	60	60	47	56	60	55	58	13	4	0	5	2	21.7%	6.7%	0.0%	8.3%	3.3%
Planning Area 1 Total	403	403	403	403	403	368	371	384	366	343	35	32	19	37	60	8.7%	7.9%	4.7%	9.2%	14.9%
Brecknock	60	60	60	60	60	55	40	42	38	28	5	20	18	22	32	8.3%	33.3%	30.0%	36.7%	53.3%
Brookfield	60	60	60	60	60	57	35	51	40	55	3	25	9	20	5	5.0%	41.7%	15.0%	33.3%	8.3%
Eleanor Palmer	30	30	30	30	30	30	30	30	30	30	0	0	0	0	0	0.0%	0.0%	0.0%	0.0%	0.0%
Kentish Town	30	30	30	30	30	30	31	31	30	30	0	-1	-1	0	0	0.0%	-3.3%	-3.3%	0.0%	0.0%
St Patrick's	30	30	30	30	30	27	29	16	23	11	3	1	14	7	19	10.0%	3.3%	46.7%	23.3%	63.3%
Torriano	58	58	58	58	58	59	58	59	58	59	-1	0	-1	0	-1	-1.7%	0.0%	-1.7%	0.0%	-1.7%
Planning Area 2 Total	268	268	268	268	268	258	223	229	219	213	10	45	39	49	55	3.7%	16.8%	14.6%	18.3%	20.5%
Abacus Belsize	30	30	30	30	30	29	30	27	29	27	1	0	3	1	3	3.3%	0.0%	10.0%	3.3%	10.0%
Carlton (CLOSED)	60	60				29	17				31	43				51.7%	71.7%			
Fleet	30	30	30	30	30	30	30	28	29	29	0	0	2	1	1	0.0%	0.0%	6.7%	3.3%	3.3%
Gospel Oak	60	60	60	60	60	60	60	60	60	60	0	0	0	0	0	0.0%	0.0%	0.0%	0.0%	0.0%
Hawley	30	30	30	30	30	30	29	30	30	30	0	1	0	0	0	0.0%	3.3%	0.0%	0.0%	0.0%
Holy Trinity NW1	30	30	30	30	30	30	30	30	30	30	0	0	0	0	0	0.0%	0.0%	0.0%	0.0%	0.0%
Holy Trinity NW3	27	27	27	27	27	25	28	24	24	22	2	-1	3	3	5	7.4%	-3.7%	11.1%	11.1%	18.5%
Primrose Hill	60	60	60	60	60	60	59	59	56	59	0	1	1	4	1	0.0%	1.7%	1.7%	6.7%	1.7%
Rhyl	60	60	60	60	60	31	43	48	40	42	29	17	12	20	18	48.3%	28.3%	20.0%	33.3%	30.0%
Rosary	45	45	45	45	45	31	43	32	42	35	14	2	13	3	10	31.1%	4.4%	28.9%	6.7%	22.2%
St Dominic's (CLOSED)	45	45	30	30		20	19	17	5		25	26	13	25		55.6%	57.8%	43.3%	83.3%	
St Paul's	30	30	30	30	30	30	29	28	26	25	0	1	2	4	5	0.0%	3.3%	6.7%	13.3%	16.7%
Planning Area 3 Total	507	507	432	432	402	405	417	383	371	359	102	90	49	61	43	20.1%	17.8%	11.3%	14.1%	10.7%
Christ Church NW1	30	30	30	30	30	30	26	26	28	23	0	4	4	2	7	0.0%	13.3%	13.3%	6.7%	23.3%
Edith Neville	30	30	30	30	30	19	27	25	28	26	11	3	5	2	4	36.7%	10.0%	16.7%	6.7%	13.3%
Netley	60	60	60	60	45	43	41	63	54	57	17	19	-3	6	-12	28.3%	31.7%	-5.0%	10.0%	-26.7%
Our Lady's	30	30	30	30	30	26	22	19	30	25	4	8	11	0	5	13.3%	26.7%	36.7%	0.0%	16.7%
Richard Cobden	60	60	60	60	60	55	57	59	57	52	5	3	1	3	8	8.3%	5.0%	1.7%	5.0%	13.3%
St Mary & St Pancras	30	30	30	30	30	30	22	27	20	21	0	8	3	10	9	0.0%	26.7%	10.0%	33.3%	30.0%
St Michael's (CLOSED)	30	30	30	30		17	7	9	0		13	23	21	30	0	43.3%	76.7%	70.0%	100.0%	
Planning Area 4 Total	270	270	270	270	225	220	202	228	217	204	50	68	42	53	21	18.5%	25.2%	15.6%	19.6%	9.3%
Argyle	60	60	60	60	45	40	55	51	42	43	20	5	9	18	2	33.3%	8.3%	15.0%	30.0%	4.4%
Christopher Hatton	30	30	30	30	30	29	30	29	28	30	1	0	1	2	0	3.3%	0.0%	3.3%	6.7%	0.0%
King's Cross Academy	60	60	60	60	60	58	59	60	56	50	2	1	0	4	10	3.3%	1.7%	0.0%	6.7%	16.7%
St Alban's	30	30	30	30	30	28	19	28	18	7	2	11	2	12	23	6.7%	36.7%	6.7%	40.0%	76.7%
St George the Martyr	30	30	30	30	30	30	30	29	29	26	0	0	1	1	4	0.0%	0.0%	3.3%	3.3%	13.3%
St Joseph's	30	30	30	30	30	30	22	24	21	15	0	8	6	9	15	0.0%	26.7%	20.0%	30.0%	50.0%
Planning Area 5 Total	240	240	240	240	225	215	215	221	194	171	25	25	19	46	54	10.4%	10.4%	7.9%	19.2%	24.0%
Camden Primary Total	1,688	1,688	1,613	1,613	1,523	1,466	1,428	1,445	1,367	1,290	222	260	168	246	233	13.2%	15.4%	10.4%	15.3%	15.3%

Information: Admission Numbers from Admission School Booklets/Schools

Actual School Rolls based on DfE January School Census / Numbers and % percentages are clearly illustrated

St Dominic's closed August 2023 ; St Micheal's closed April 2023 ; Carlton Primary School closed August 2021

Percentage unfilled calculations are based on PAN: any permanently unused capacity or temporary capping is not included

The Department for Education (DfE) guidance suggests authorities should target 5% surplus for efficient operation of the school system and expression of parental preference,

Key to Conditional Formatting (% unfilled places) - numbers are rounded which may affect formatting

GREEN - surplus school places equal or under 5.0%
AMBER - surplus school places between 5.01% and 10.0%
RED - surplus school places equal or over 10.01%

Primary Reception to Year 6 Trend 2019/20 to 2023/24: Admission Number, Number on Roll, Unfilled Places, % Unfilled Places

Appendix B, Table 2B

School Name	Planned Admission Number					Number on Roll Reception to Year 6					Number Unfilled Places					Percentage Unfilled YR-6 Places %				
	19/20	20/21	21/22	22/23	23/24	19/20	20/21	21/22	22/23	23/24	19/20	20/21	21/22	22/23	22/24	19/20	20/21	21/22	22/23	23/24
Christ Church NW3	192	193	193	194	194	190	190	189	192	185	2	3	4	2	9	1.0%	1.6%	2.1%	1.0%	4.6%
Emmanuel	210	210	210	210	210	210	208	201	204	210	0	2	9	6	0	0.0%	1.0%	4.3%	2.9%	0.0%
Fitzjohn's	210	210	210	210	210	205	207	208	206	205	5	3	2	4	5	2.4%	1.4%	1.0%	1.9%	2.4%
Hampstead Parochial	240	240	240	210	210	233	232	201	204	203	7	8	39	6	7	2.9%	3.3%	16.3%	2.9%	3.3%
Kingsgate	690	690	690	690	660	633	616	605	598	541	57	74	85	92	119	8.3%	10.7%	12.3%	13.3%	18.0%
New End	420	420	420	420	420	330	300	301	316	306	90	120	119	104	114	21.4%	28.6%	28.3%	24.8%	27.1%
St Eugene de Mazenod	210	210	210	210	210	203	204	199	198	196	7	6	11	12	14	3.3%	2.9%	5.2%	5.7%	6.7%
St Luke's	105	105	105	105	105	98	98	102	98	98	7	7	3	7	7	6.7%	6.7%	2.9%	6.7%	6.7%
St Mary's Kilburn	210	210	210	210	210	201	201	195	202	203	9	9	15	8	7	4.3%	4.3%	7.1%	3.8%	3.3%
West Hampstead	420	420	420	420	420	385	379	375	357	365	35	41	45	63	55	8.3%	9.8%	10.7%	15.0%	13.1%
Planning Area 1 Total	2,907	2,908	2,908	2,879	2,849	2,688	2,635	2,576	2,575	2,512	219	273	332	304	337	7.5%	9.4%	11.4%	10.6%	11.8%
Brecknock	420	420	420	420	420	334	310	296	286	261	86	110	124	134	159	20.5%	26.2%	29.5%	31.9%	37.9%
Brookfield	420	420	420	420	420	397	376	360	335	342	23	44	60	85	78	5.5%	10.5%	14.3%	20.2%	18.6%
Eleanor Palmer	210	210	210	210	210	209	210	210	210	210	1	0	0	0	0	0.5%	0.0%	0.0%	0.0%	0.0%
Kentish Town	210	210	210	210	210	211	209	211	208	206	-1	1	-1	2	4	-0.5%	0.5%	-0.5%	1.0%	1.9%
St Patrick's	210	210	210	210	210	185	185	166	150	135	25	25	44	60	75	11.9%	11.9%	21.0%	28.6%	35.7%
Torriano	410	408	408	406	406	412	411	414	411	408	-2	-3	-6	-5	-2	-0.5%	-0.7%	-1.5%	-1.2%	-0.5%
Planning Area 2 Total	1,880	1,878	1,878	1,876	1,876	1,748	1,701	1,657	1,600	1,562	132	177	221	276	314	7.0%	9.4%	11.8%	14.7%	16.7%
Abacus Belsize	210	210	210	210	210	171	164	163	153	145	39	46	47	57	65	18.6%	21.9%	22.4%	27.1%	31.0%
Carlton (CLOSED)	420	420				235	190				185	230				44.0%	54.8%			
Fleet	210	210	210	210	210	196	204	206	204	203	14	6	4	6	7	6.7%	2.9%	1.9%	2.9%	3.3%
Gospel Oak	420	420	420	420	420	416	407	412	414	411	4	13	8	6	9	1.0%	3.1%	1.9%	1.4%	2.1%
Hawley	210	210	210	210	210	197	195	198	199	197	13	15	12	11	13	6.2%	7.1%	5.7%	5.2%	6.2%
Holy Trinity NW1	210	210	210	210	210	209	210	208	210	208	1	0	2	0	2	0.5%	0.0%	1.0%	0.0%	1.0%
Holy Trinity NW3	189	189	189	189	189	182	184	177	176	174	7	5	12	13	15	3.7%	2.6%	6.3%	6.9%	7.9%
Primrose Hill	420	420	420	420	420	405	396	392	398	398	15	24	28	22	22	3.6%	5.7%	6.7%	5.2%	5.2%
Rhyl	420	420	420	420	420	316	292	413	367	350	104	128	7	53	70	24.8%	30.5%	1.7%	12.6%	16.7%
Rosary	315	315	315	315	315	281	278	267	290	280	34	37	48	25	35	10.8%	11.7%	15.2%	7.9%	11.1%
St Dominic's	315	315	210	210		186	161	138	41		129	154	72	169		41.0%	48.9%	34.3%	80.5%	
St Paul's	210	210	210	210	210	206	196	192	194	187	4	14	18	16	23	1.9%	6.7%	8.6%	7.6%	11.0%
Planning Area 3 Total	3,549	3,549	3,024	3,024	2,814	3,000	2,877	2,766	2,646	2,553	549	672	258	378	261	15.5%	18.9%	8.5%	12.5%	9.3%
Christ Church NW1	210	210	210	210	210	197	198	192	189	182	13	12	18	21	28	6.2%	5.7%	8.6%	10.0%	13.3%
Edith Neville	210	210	210	210	210	171	166	167	174	185	39	44	43	36	25	18.6%	21.0%	20.5%	17.1%	11.9%
Netley	420	420	420	420	405	341	331	362	336	330	79	89	58	84	75	18.8%	21.2%	13.8%	20.0%	18.5%
Our Lady's	210	210	210	210	210	268	239	211	270	228	-58	-29	-1	-60	-18	-27.6%	-13.8%	-0.5%	-28.6%	-8.6%
Richard Cobden	420	420	420	420	420	365	362	364	366	369	55	58	56	54	51	13.1%	13.8%	13.3%	12.9%	12.1%
St Mary & St Pancras	210	210	210	210	210	202	186	197	191	176	8	24	13	19	34	3.8%	11.4%	6.2%	9.0%	16.2%
St Michael's	210	210	210	210		167	134	105	0		43	76	105	210		20.5%	36.2%	50.0%	100.0%	
Planning Area 4 Total	1,890	1,890	1,890	1,890	1,665	1,711	1,616	1,598	1,526	1,470	179	274	292	364	195	9.5%	14.5%	15.4%	19.3%	11.7%
Argyle	420	420	420	420	405	312	299	328	312	273	108	121	92	108	132	25.7%	28.8%	21.9%	25.7%	32.6%
Christopher Hatton	210	210	210	210	210	207	207	205	197	203	3	3	5	13	7	1.4%	1.4%	2.4%	6.2%	3.3%
King's Cross Academy	300	360	360	420	420	291	347	387	363	347	9	13	-27	57	73	3.0%	3.6%	-7.5%	13.6%	17.4%
St Alban's	210	210	210	210	210	178	153	198	150	103	32	57	12	60	107	15.2%	27.1%	5.7%	28.6%	51.0%
St George the Martyr	210	210	210	210	210	203	203	205	201	182	7	7	5	9	28	3.3%	3.3%	2.4%	4.3%	13.3%
St Joseph's	210	210	210	210	210	180	174	185	164	151	30	36	25	46	59	14.3%	17.1%	11.9%	21.9%	28.1%
Planning Area 5 Total	1,560	1,620	1,620	1,680	1,665	1,371	1,383	1,508	1,387	1,259	189	237	112	293	406	12.1%	14.6%	6.9%	17.4%	24.4%
Camden Primary Total	11,786	11,845	11,320	11,349	10,869	10,518	10,212	10,105	9,734	9,356	1,268	1,633	1,215	1,615	1,513	10.8%	13.8%	10.7%	14.2%	13.9%

Information: Admission Numbers from Admission School Booklets/Schools

Actual School Rolls based on DfE January School Census / Numbers and % percentages are clearly illustrated

St Dominic's closed August 2023 ; St Micheal's closed April 2023 ; Carlton Primary School closed August 2021

Percentage unfilled calculations are based on PAN: any permanently unused capacity or temporary capping is not included

The Department for Education (DfE) guidance suggests authorities should target 5% surplus for efficient operation of the school system and expression of parental preference,

Key to Conditional Formatting (% unfilled places) - numbers are rounded which may affect formatting

GREEN - surplus school places equal or under 5.0%
AMBER - surplus school places between 5.01% and 10.0%
RED - surplus school places equal or over 10.01%

Primary School Actual Net Capacity 2024

Appendix B: Table 3A

DfE No	School	As At May NOR* (DfE)	Net Capacity 2024	Net Capacity % Surplus MAY
3323	Christ Church, Hampstead	192	180	-6.7%
3340	Emmanuel	210	210	0.0%
2797	Fitzjohn's	195	210	7.1%
3352	Hampstead Parochial	202	210	3.8%
2843	Kingsgate	548	895	38.8%
2438	New End	304	411	26.0%
3649	St Eugene de Mazenod	199	210	5.2%
2000	St Luke's Free School	99	105	5.7%
3517	St Mary's Kilburn	203	210	3.3%
2036	West Hampstead (Beckford)	371	420	11.7%
Planning Area 1 Total		2,523	3,061	17.6%
2065	Brecknock	262	411	36.3%
2078	Brookfield	345	420	17.9%
2841	Eleanor Palmer	210	210	0.0%
3370	Kentish Town	201	210	4.3%
3560	St Patrick	138	210	34.3%
2603	Torriano Primary	405	426	4.9%
Planning Area 2 Total		1,561	1,887	17.3%
2001	Abacus Belsize Free School	146	210	30.5%
2219	Fleet	203	210	3.3%
2775	Gospel Oak	412	420	1.9%
2290	Hawley Primary	198	210	5.7%
3361	Holy Trinity and Saint Silas	209	190	-10.0%
3359	Holy Trinity, NW3	174	168	-3.6%
2475	Primrose Hill	397	420	5.5%
2502	Rhyl	352	552	36.2%
3391	Rosary	273	315	13.3%
3429	St Dominic's		210	100.0%
3568	St Paul's	187	210	11.0%
Planning Area 3 Total		2,551	3,115	18.1%
3327	Christ Church, NW1	181	210	13.8%
2184	Edith Neville	188	210	10.5%
2436	Netley	326	420	22.4%
3655	Our Lady	224	210	-6.7%
2507	Richard Cobden	370	420	11.9%
3521	St Mary & St Pancras	178	210	15.2%
Planning Area 4 Total		1,467	1,680	12.7%
2019	Argyle	262	420	37.6%
2842	Christopher Hatton	203	210	3.3%
2002	King's Cross Academy	345	420	17.9%
3398	St Alban's	98	210	53.3%
3441	St George the Martyr's	187	210	11.0%
3482	St Joseph's	145	209	30.6%
Planning Area 5 Total		1,240	1,679	26.1%
Camden Primary Total		9,342	11,422	18.2%

Information

School Net Capacity 2024 provided by Camden Property and Contracts

*Includes actual numbers on roll (NOR) from provisional May 2024 DfE School Census (YR-6), representing the 2023/24 cohort

Primary Actual Net Capacity Surplus Trend 2020 to 2024

Appendix B: Table 3B

Camden Total		Percentage % Actual Net Capacity Surplus					Numbers 2021		
		2020	2021	2022	2023	2024	*Actual Pupils NOR MAY	Net Capacity	Actual Surplus NOR/NetCapacity
Primary	PA1	13.3	15.5	10.0	15.9	17.6	2,523	3,061	538
	PA2	13.9	17.4	0.1	15.2	17.3	1,561	1,887	326
	PA3	11.2	13.2	6.7	15.1#	18.1	2,551	3,115	564
	PA4	15.8	16.5	-7.9	9.2	12.7	1,467	1,680	213
	PA5	14.2	18.1	2.9	17.4	26.1	1,240	1,679	439
	Camden Primary Total	13.6	15.9	3.8	15.6	18.2	9,342	11,422	2,080

Information

School Net Capacity 2024 provided by Camden Property and Contracts

*Includes actual numbers on roll (NOR) from the provisional May 2023 DfE School Census (YR-6), representing the 2022/23 cohort

Percentage % net capacity surplus is based on the May DfE School Census

Reception Primary Offer Day: School Analysis Trend 2021 to 2024

Appendix B, Table 4A

Offered Primary School	Admission Number*				Camden Resident				Non-Resident				All Offers				Camden Residents %				2024 Places		
	2021	2022	2023	2024	2021	2022	2023	2024	2021	2022	2023	2024	2021	2022	2023	2024	2021	2022	2023	2024	Available	% full	Allocated
Christ Church Primary School (Camden NW3)	28	28	28	28	24	24	26	24	4	4	2	4	28	28	28	28	89%	86%	93%	86%	0	100%	0
Emmanuel C of E School	30	30	30	30	30	27	29	26	0	3	1	4	30	30	30	30	97%	90%	97%	87%	0	100%	0
Fitzjohn's School	30	30	30	30	30	29	29	29	0	1	1	1	30	30	30	30	100%	97%	97%	97%	0	100%	0
Hampstead Parochial C of E School	30	30	30	30	26	22	20	27	4	8	10	3	30	30	30	30	93%	73%	67%	90%	0	100%	0
Kingsgate Primary School	90	90	90	90	72	80	65	67	18	10	18	23	90	90	83	90	86%	89%	78%	74%	0	100%	0
New End Primary School	60	60	60	30	53	47	28	27	7	11	2	3	58	58	30	30	98%	81%	93%	90%	0	100%	0
St Eugene de Mazenod RC School	30	30	30	30	22	23	21	20	8	7	9	10	30	30	30	30	73%	77%	70%	67%	0	100%	0
St Luke's C of E 'Free School'	15	15	15	15	10	12	14	11	5	3	1	4	15	15	15	15	93%	80%	93%	73%	0	100%	0
St Mary's Kilburn CofE Primary School	30	30	30	30	27	28	23	25	3	2	7	5	30	30	30	30	83%	93%	77%	83%	0	100%	0
West Hampstead Primary School (Beckford)	60	60	60	60	50	49	52	45	10	11	8	16	60	60	60	61	92%	82%	87%	74%	-1	102%	0
Total Planning Area 1	403	403	403	373	344	341	307	301	59	60	59	73	401	401	366	374	86%	85%	84%	80%	-1	100%	0
Brecknock Primary School	60	60	60	60	30	18	24	21	11	19	11	9	37	37	35	30	63%	49%	69%	70%	30	50%	0
Brookfield Primary School	60	60	60	60	46	38	48	33	13	10	12	14	48	48	60	47	68%	79%	80%	70%	13	78%	3
Eleanor Palmer School	30	30	30	30	29	24	26	27	1	6	4	3	30	30	30	30	83%	80%	87%	90%	0	100%	0
Kentish Town C of E Primary School #	30	30	30	30	29	26	27	30	0	0	0	0	26	26	27	30	100%	100%	100%	100%	0	100%	0
St Patrick's Roman Catholic Primary School	30	30	30	30	29	18	18	22	1	0	0	1	18	18	18	23	86%	100%	100%	96%	7	77%	7
Torriano Primary School	58	58	58	58	43	40	50	47	15	18	8	11	58	58	58	58	72%	69%	86%	81%	0	100%	0
Total Planning Area 2	268	268	268	268	206	164	193	180	41	53	35	38	217	217	228	218	95%	76%	85%	83%	50	81%	10
Abacus Belsize 'Free School'	30	30	30	30	29	29	30	29	1	1	0	1	30	30	30	30	93%	97%	100%	97%	0	100%	0
Carlton Primary School (closed)	0	0	0	0	0	0	0	0	0	0	0	0	0	0	0	0	n/a	n/a	n/a	n/a	n/a	n/a	n/a
Fleet School	30	30	30	30	30	30	29	30	0	0	1	0	30	30	30	30	100%	100%	100%	100%	0	100%	0
Gospel Oak Primary School	60	60	60	60	60	60	60	60	0	0	0	0	60	60	60	60	100%	100%	100%	100%	0	100%	0
Hawley Primary School	30	30	30	30	30	29	30	30	0	1	0	0	30	30	30	30	100%	97%	100%	100%	0	100%	0
Holy Trinity & St. Silas C of E Primary School	30	30	30	30	30	30	30	30	0	0	0	0	30	30	30	30	97%	100%	100%	100%	0	100%	0
Holy Trinity C of E School (NW3)	27	27	27	27	26	26	27	27	1	1	0	0	27	27	27	27	96%	96%	100%	100%	0	100%	0
Primrose Hill Primary School	60	60	60	60	59	56	58	54	1	3	2	5	59	59	60	59	98%	95%	97%	92%	1	98%	0
Rhyl Primary School	60	60	60	60	59	37	52	59	1	0	0	0	37	37	52	59	100%	100%	100%	100%	1	98%	25
Rosary RC Primary School	45	45	45	45	37	42	41	40	3	2	3	5	44	44	44	45	89%	95%	93%	89%	0	100%	0
St Dominic's RC Primary School	45	30	0	0	30	23	0	0	0	0	0	0	23	23	0	0	100%	100%	n/a	n/a	n/a	n/a	n/a
St Paul's CofE School	30	30	30	30	29	29	29	30	1	1	1	0	30	30	30	30	100%	97%	97%	100%	0	100%	0
Total Planning Area 3	447	447	402	402	419	391	386	389	8	9	7	11	400	400	393	400	93%	98%	98%	97%	2	99.5%	25
Christ Church C of E School (Camden NW1)	30	30	30	30	29	29	25	18	0	1	1	2	30	30	26	20	100%	97%	96%	90%	10	67%	1
Edith Neville Primary School	30	30	30	30	26	30	28	29	0	0	1	1	30	30	29	30	97%	100%	97%	97%	0	100%	0
Netley Primary School	60	60	45	45	59	57	45	45	1	2	0	0	59	59	45	45	100%	97%	100%	100%	0	100%	0
Our Lady's RC Primary School	30	30	30	30	21	30	29	21	0	0	1	1	30	30	30	22	96%	100%	97%	95%	8	73%	2
Richard Cobden Primary School	60	60	60	60	59	49	55	51	1	1	0	1	50	50	55	52	98%	98%	100%	98%	8	87%	1
St Aloysius RC Primary School (closed)	0	0	0	0	n/a	n/a	n/a	n/a	n/a	n/a	n/a	n/a	n/a	n/a	n/a	n/a	n/a	n/a	n/a	n/a	n/a	n/a	n/a
St Mary and St Pancras CofE School	30	30	30	30	28	24	19	22	1	0	1	0	24	24	20	22	100%	100%	95%	100%	8	73%	2
St Michael's Camden Town CofE School	30	30	30	0	9	0	0	0	0	0	0	0	0	0	0	0	100%	n/a	n/a	n/a	n/a	n/a	n/a
Total Planning Area 4	270	270	255	225	231	219	201	186	3	4	4	5	223	223	205	191	91%	98%	98%	97%	34	85%	6
Argyle Primary School	60	60	60	45	41	41	44	31	2	2	1	2	43	43	45	33	95%	95%	98%	94%	12	73%	0
Christopher Hatton School	30	30	30	30	25	25	28	25	5	5	2	5	30	30	30	30	93%	83%	93%	83%	0	100%	0
King's Cross Academy	60	60	60	60	38	40	43	34	24	20	17	26	60	60	60	60	63%	67%	72%	57%	0	100%	2
St Alban's C of E Primary School	30	30	30	30	19	12	10	8	0	1	0	0	13	13	10	8	76%	92%	100%	100%	22	27%	0
St George The Martyr Primary School	30	30	30	30	28	27	29	19	0	1	1	3	28	28	30	22	93%	96%	97%	86%	8	73%	0
St Joseph's RC Primary School (Camden)	30	30	30	30	14	16	13	8	7	4	4	7	20	20	17	15	78%	80%	76%	53%	15	50%	0
Total Planning Area 5	240	240	240	225	165	161	167	125	38	33	25	43	194	194	192	168	90%	83%	87%	74%	57	75%	2
Total Camden Primary Offer	1,628	1,628	1,568	1,493	1,365	1,276	1,254	1,181	149	159	130	170	1,435	1,435	1,384	1,351	91%	89%	91%	87%	142	90%	43
Other LA School Offer					157	156	175	161					157	156	175	161	100%	100%	100%	100%			
Total Offers					1,522	1,415	1,429	1,342	149	159	128	170	1,554	1,554	1,559	1,512	92%	91%	91%	89%			
Total Applicants					1,538	1,424	1,438	1,343	450	495	427	412	1,919	1,880	1,864	1,755	77%	76%	76%	77%			
# No Offer (unplaced) / Other LA School					16	9	9	1	301	356	299	242	365	326	305	243	3%	3%	4%	0.4%			
% No Offer (unplaced) / Other LA School					1%	1%	1%	0%	67%	72%	70%	59%	19%	17%	16%	14%							

Source: Admissions Offer Day - THIS IS THE OFFER DAY POSITION ONLY - SEN & Late applicants are INCLUDED in this analysis

Notes: Permanent Changes: St Aloysius RC (PA3) closed December 2019 (2019/20) -2FE, Carlton Primary School (PA2) closed August 2021 (2021/22)-2FE.

Unplaced non-residents: Camden is not responsible for finding places, these children may be allocated a school place by another borough

Borough Residence of Children Attending Camden Schools: Trend 2019/20 to 2023/24

Appendix B: Table 5A

Primary Reception to Year 6	2019/2020		2020/2021		2021/2022		2022/2023		2023/2024	
	No.	%	No.	%	No.	%	No.	%	No.	%
Camden	9,120	87%	8,815	86%	8,706	86%	8,347	85%	8,160	86%
Islington	576	5%	612	6%	615	6%	600	6%	542	6%
Brent	339	3%	352	3%	331	3%	347	4%	339	4%
Barnet	251	2%	226	2%	235	2%	262	3%	270	3%
Haringey	51	0%	44	0%	77	1%	39	0%	36	0%
Westminster	66	1%	67	1%	38	0%	82	1%	73	1%
Enfield	11	0%	3	0%	5	0%	4	0%	4	0%
Hackney	21	0%	15	0%	17	0%	10	0%	7	0%
Other London Borough	69	1%	67	1%	66	1%	67	1%	89	1%
Outside London	14	0%	11	0%	12	0%	20	0%	8	0%
Camden Primary Total	10,518	100%	10,212	100%	10,102	100%	9,778	100%	9,526	100%

Source: January DfE School Census 2020 to 2024

Children attending Camden schools / Percentages are rounded

Residence of Children Attending Camden Primary Schools: Percentage % Composition and Year Group Summary 2019/20 to 2023/24

Appendix B: Table 5B

PA	Native ID	School Name	2019/2020				2020/2021				2021/2022				2023/2023				2023/2024			
			CR %		OBR %		CR %		OBR %		CR %		OBR %		CR %		OBR %		CR %		OBR %	
			R	R-6	R	R-6	R	R-6	R	R-6	R	R-6	R	R-6	R	R-6	R	R-6	R	R-6	R	R-6
Planning Area 1	2023323	Christ Church NW3	82	81	18	19	86	79	14	21	89	78	11	22	79	79	21	21	82	82	18	18
	2023340	Emmanuel	100	93	0	7	96	92	4	8	93	88	7	12	86	83	14	17	93	86	7	14
	2022797	Fitzjohn's	100	95	0	5	90	92	10	8	100	93	0	7	97	91	3	9	97	93	3	7
	2023352	Hampstead Parochial	77	78	23	22	90	78	10	22	80	78	20	22	70	75	30	25	76	72	24	28
	2022843	Kingsgate	81	73	19	27	77	71	23	29	76	73	24	27	81	73	19	27	71	72	29	28
	2022438	New End	88	85	13	15	94	85	6	15	85	84	15	16	66	84	34	16	88	83	12	17
	2023649	St Eugene de Mazenod	70	63	30	37	67	61	33	39	77	63	23	37	73	62	27	38	73	65	27	35
	2022000	St Luke's Free School	73	67	27	33	93	69	7	31	67	70	33	30	71	71	29	29	81	70	19	30
	2023517	St Mary's Kilburn	75	80	25	20	77	78	23	22	90	80	10	20	87	78	13	22	76	77	24	22
	2022036	West Hampstead (Beckford)	77	82	23	18	89	83	11	17	82	83	18	17	80	80	20	20	76	79	24	21
	Planning Area 1	82	80	18	20	86	79	14	21	84	79	16	21	80	78	20	22	81	78	19	22	
Planning Area 2	2022065	Brecknock	67	67	33	33	63	67	38	33	60	64	40	36	58	62	42	38	68	63	32	37
	2022078	Brookfield	72	76	28	24	71	74	29	26	80	76	20	24	80	79	20	21	80	79	20	21
	2022841	Eleanor Palmer	73	72	27	28	83	74	17	26	90	76	10	24	83	78	17	22	80	77	20	23
	2023370	Kentish Town	97	97	3	3	97	97	3	3	100	97	0	3	90	95	10	5	93	95	7	5
	2023560	St Patrick	93	92	7	8	86	92	14	8	94	93	6	7	91	94	9	6	100	95	0	5
	2022603	Torriano	61	76	39	24	72	73	28	27	73	73	27	27	74	73	26	27	86	74	14	26
	Planning Area 2	77	80	23	20	79	80	21	20	83	80	17	20	78	78	22	22	85	80	15	20	
Planning Area 3	2022001	Abacus Belsize Free School	90	85	10	15	93	87	7	13	96	88	4	12	97	88	3	12	93	89	7	11
		Carlton	97	98	3	2	100	98	0	2												
	2022219	Fleet	97	98	3	2	100	96	0	4	100	97	0	3	97	96	3	4	97	96	3	4
	2022775	Gospel Oak	100	99	0	1	100	99	0	1	100	100	0	0	98	99	2	1	98	97	2	3
	2022290	Hawley	97	95	3	5	100	98	0	2	100	98	0	2	97	96	3	4	100	98	0	2
	2023361	Holy Trinity & St Silas	100	95	0	5	97	93	3	7	93	92	7	8	97	93	3	7	100	96	0	4
	2023359	Holy Trinity NW3	96	98	4	2	96	98	4	2	96	96	4	4	96	96	4	4	100	95	0	5
	2022475	Primrose Hill	95	95	5	5	98	95	2	5	98	95	2	5	96	94	4	6	100	95	0	5
	2022502	Rhyl	100	99	0	1	98	98	2	2	96	98	4	2	100	99	0	1	95	97	5	3
	2023391	Rosary	94	86	6	14	84	87	16	13	91	88	9	12	98	89	2	11	89	90	11	10
	2023568	St Dominic's	90	96	10	4	100	97	0	3	100	96	0	4	100	100	0	0				
	St Paul's	97	95	3	5	97	94	3	6	89	89	11	11	92	93	8	7	92	95	8	5	
	Planning Area 3	96	95	4	5	97	95	3	5	96	94	4	6	97	95	3	5	96	95	4	5	
Planning Area 4	2023327	Christ Church NW1	97	97	3	3	96	95	4	5	100	98	0	2	100	98	0	2	100	98	0	2
	2022184	Edith Neville	100	98	0	2	100	98	0	2	100	97	0	3	100	98	0	2	100	97	0	3
	2022436	Netley	100	99	0	1	100	100	0	0	62	56	38	44	98	99	2	1	100	99	0	1
	2023655	Our Lady's	96	92	4	8	95	94	5	6	98	99	2	1	100	98	0	2	96	96	4	4
	2022507	Richard Cobden	100	99	0	1	96	98	4	2	100	97	0	3	98	98	2	2	100	98	0	2
	2023521	St Mary & St Pancras	100	99	0	1	100	99	0	1	96	98	4	2	100	98	0	2	95	98	5	2
		St Michael	100	94	0	6	100	96	0	4	100	97	0	3								
	Planning Area 4	99	97	1	3	98	97	2	3	94	92	6	8	99	98	1	2	99	98	1	2	
Planning Area 5	2022019	Argyle	98	96	3	4	95	97	5	3	98	97	2	3	95	95	5	5	95	95	5	5
	2022842	Christopher Hatton	79	79	21	21	97	81	3	19	90	81	10	19	82	81	18	19	93	85	7	15
	2022002	King's Cross Academy	50	59	50	41	63	58	37	42	62	56	38	44	64	53	36	47	72	57	28	43
	2023398	St Albans	89	85	11	15	79	85	21	15	100	90	0	10	89	93	11	7	71	92	29	8
	2023441	St George the Martyr	100	95	0	5	97	96	3	4	100	96	0	4	89	96	11	4	92	95	8	5
	2023482	St Joseph's	73	71	27	29	91	70	9	30	63	70	38	30	67	65	33	35	73	64	27	36
	Planning Area 5	82	81	18	19	87	81	13	19	85	82	15	18	80	78	20	22	83	81	17	19	
Camden Primary Total			87	86	13	14	89	86	11	14	88	85	12	15	87	86	13	14	89	86	11	14

Source: January DfE School Census 2019 to 2024

Percentages are based on all pupils in reception or reception to year 6: CR - Camden Resident / OBR - Other Borough Resident

Carlton primary school closed in 2021, St Michaels primary school closed in 2022; St Dominic's school closed in 2023; historic data continues to be shown

Camden Residents Attending Schools in Other Boroughs, Reception to Year 6: 2019/20 to 2023/24
Appendix B: Table 6

Borough	2019/2020	2020/2021	2021/2022	2022/2023	2023/2024
Barking & Dagenham	0	<5	0		0
Barnet	77	80	81	44	77
Brent	259	257	264	252	246
City	0	0	0	0	0
Croydon	0	0	0	0	0
Ealing	0	<5	0	0	<5
Enfield	<5	<5	<5	<5	<5
Greenwich	0	0	0	0	0
Hammersmith & Fulham	<5	0	<5	7	<5
Hackney	15	16	17	20	15
Haringey	76	75	70	72	70
Harrow	<5	<5	0	0	<5
Hertfordshire	0	0	0	<5	<5
Hounslow	0	0	0		0
Islington	301	302	294	284	280
Kensington & Chelsea	20	16	11	7	7
Lambeth	<5	<5	<5	<5	<5
Lewisham	<5	<5	0	<5	<5
Newham	0	<5	<5	<5	<5
Redbridge		0	0	0	0
Richmond	0	0	<5	0	0
Southwark	0	<5	11	13	15
Sutton	0	0	0	0	0
Tower Hamlets	<5	<5	<5	<5	<5
Waltham Forest	0	0	0	0	<5
Wandsworth	0	<5	<5	0	0
Westminster	666	603	555	561	539
Total	1,427	1,369	1,318	1,271	1,269

Source: DfE School Census, January 2020-24 DfE summary

Blanks indicate borough not supplying resident data, academy data provided in later years / <5 indicates numbers less than or equal to 5

Camden residents attending other borough schools / includes all residents of primary age

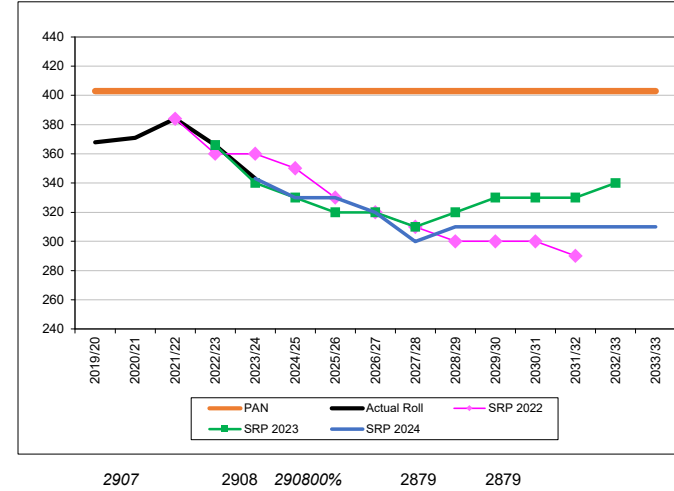
Camden Planning Area 1 (North West) GLA School Roll Projections: Primary Age Forecasts

SRP = School Roll Projections received from GLA
PAN = (Planned Admission Number) based on September. Actual School Rolls: based on children attending by national curriculum year group from the January DfE School Census.
Forecasts SRP = GLA school roll forecasts should be treated with caution, estimates change/not actuals, therefore are rounded to nearest 10 to avoid misinterpretation.

2907 2908 2908 2879 2849

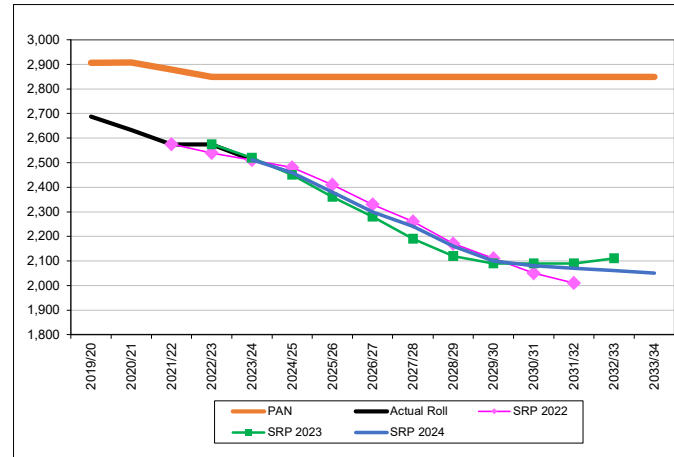
GLA Forecast: children aged 4 years old/reception

PA1	PAN	Actual Roll	SRP 2022	SRP 2023	SRP 2024	No. Surplus/ Deficit	% Surplus/ Deficit
						PAN	PAN
2015/16	432	419				13	3.0%
2016/17	432	388				44	10.2%
2017/18	403	376				27	6.7%
2018/19	403	375				28	6.9%
2019/20	403	368				35	8.7%
2020/21	403	371				32	7.9%
2021/22	403	384	384			19	4.7%
2022/23	403	366	360	366		37	9.2%
2023/24	403	343	360	340	343	60	14.9%
2024/25	403		350	330	330	73	18%
2025/26	403		330	320	330	73	18%
2026/27	403		320	320	320	83	21%
2027/28	403		310	310	300	103	26%
2028/29	403		300	320	310	93	23%
2029/30	403		300	330	310	93	23%
2030/31	403		300	330	310	93	23%
2031/32	403		290	330	310	93	23%
2032/33	403			340	310	93	23%
2033/33	403				310	93	23%



GLA Forecast: children aged 4 to 10 years old/reception to year 6

PA1	PAN	Actual Roll	SRP 2022	SRP 2023	SRP 2024	No. Surplus/ Deficit	% Surplus/ Deficit
						PAN	PAN
2015/16	2,754	2,682				72	2.6%
2016/17	2,844	2,747				97	3.4%
2017/18	2,905	2,759				146	5.0%
2018/19	2,936	2,729				207	7.1%
2019/20	2,907	2,688				219	7.5%
2020/21	2,908	2,633				275	9.5%
2021/22	2,879	2,575	2,575			304	10.6%
2022/23	2,850	2,575	2,540	2,575		275	9.6%
2023/24	2,849	2,512	2,510	2,520	2,512	337	11.8%
2024/25	2,849		2,480	2,450	2,460	389	14%
2025/26	2,849		2,410	2,360	2,380	469	16%
2026/27	2,849		2,330	2,280	2,300	549	19%
2027/28	2,849		2,260	2,190	2,240	609	21%
2028/29	2,849		2,170	2,120	2,160	689	24%
2029/30	2,849		2,110	2,090	2,100	749	26%
2030/31	2,849		2,050	2,090	2,080	769	27%
2031/32	2,849		2,010	2,090	2,070	779	27%
2032/33	2,849			2,110	2,060	789	28%
2033/34	2,849				2,050	799	28%



Camden Planning Area 2 (North East) GLA School Roll Projections: Primary Age Forecasts

Appendix B, Table 7B

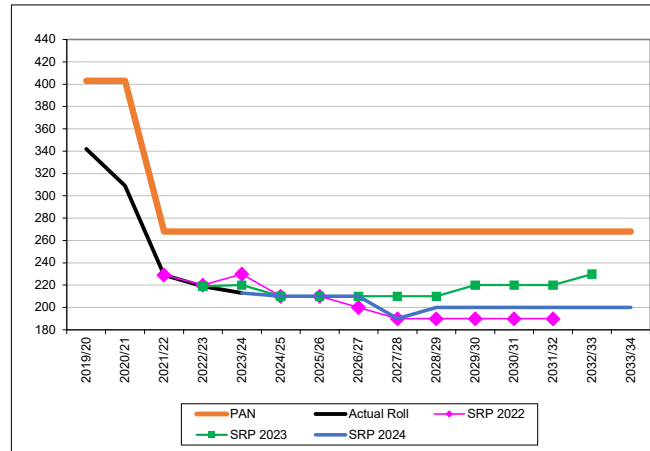
SRP = School Roll Projections received from GLA

PAN: (Planned Admission Number) based on September.
Actual School Rolls: based on children attending by national curriculum year group from the January DFE School Census.

Forecasts SRP = GLA school roll forecasts should be treated with caution, estimates change/not actuals, therefore rounded nearest 10 to avoid misinterpretation.

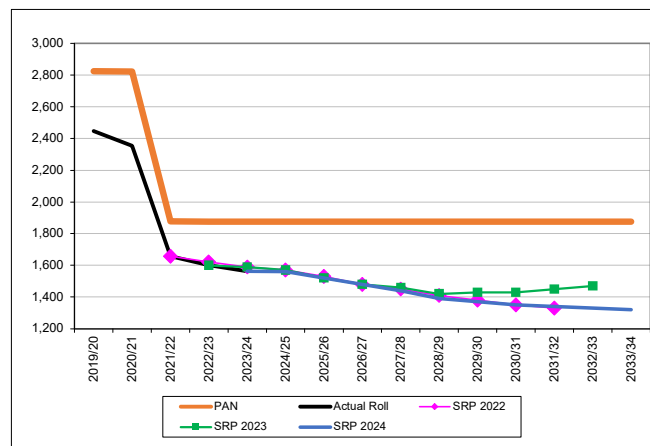
GLA Forecast: children aged 4 years old/reception

PA2	PAN	Actual Roll	SRP 2022	SRP 2023	SRP 2024	No. Surplus/Deficit		% Surplus/Deficit	
						PAN	PAN	PAN	PAN
2015/16	403	383				20		5.0%	
2016/17	403	353				50		12.4%	
2017/18	403	351				52		12.9%	
2018/19	403	341				62		15.4%	
2019/20	403	342				61		15.1%	
2020/21	403	309				94		23.3%	
2021/22	268	229	229			39		14.6%	
2022/23	268	219	220	219		49		18.3%	
2023/24	268	213	230	220	213	55		20.5%	
2024/25	268		210	210	210	58		22%	
2025/26	268		210	210	210	58		22%	
2026/27	268		200	210	210	58		22%	
2027/28	268		190	210	190	78		29%	
2028/29	268		190	210	200	68		25%	
2029/30	268		190	220	200	68		25%	
2030/31	268		190	220	200	68		25%	
2031/32	268		190	220	200	68		25%	
2032/33	268			230	200	68		25%	
2033/34	268				200	68		25%	



GLA Forecast: children aged 4 to 10 years old/reception to year 6

PA2	PAN	Actual Roll	SRP 2022	SRP 2023	SRP 2024	No. Surplus/Deficit		% Surplus/Deficit	
						PAN	PAN	PAN	PAN
2015/16	2,833	2,664				169		6.0%	
2016/17	2,831	2,627				204		7.2%	
2017/18	2,829	2,568				261		9.2%	
2018/19	2,827	2,510				317		11.2%	
2019/20	2,825	2,447				378		13.4%	
2020/21	2,823	2,353				470		16.6%	
2021/22	1,878	1,657	1,657			221		11.8%	
2022/23	1,876	1,600	1,620	1,600		276		14.7%	
2023/24	1,876	1,562	1,590	1,590	1,562	314		16.7%	
2024/25	1,876		1,570	1,570	1,560	316		17%	
2025/26	1,876		1,530	1,520	1,520	356		19%	
2026/27	1,876		1,480	1,480	1,480	396		21%	
2027/28	1,876		1,450	1,460	1,440	436		23%	
2028/29	1,876		1,410	1,420	1,390	486		26%	
2029/30	1,876		1,380	1,430	1,370	506		27%	
2030/31	1,876		1,350	1,430	1,350	526		28%	
2031/32	1,876		1,330	1,450	1,340	536		29%	
2032/33	1,876			1,470	1,330	546		29%	
2033/34	1,876				1,320	556		30%	



Camden Planning Area 3 (Central) GLA School Roll Projections: Primary Age Forecasts

SRP = School Roll Projections received from GLA

Actuals = PAN: (Planned Admission Number) based on September.

Actual School Rolls: based on children attending by national curriculum year group from the January DfE School Census.

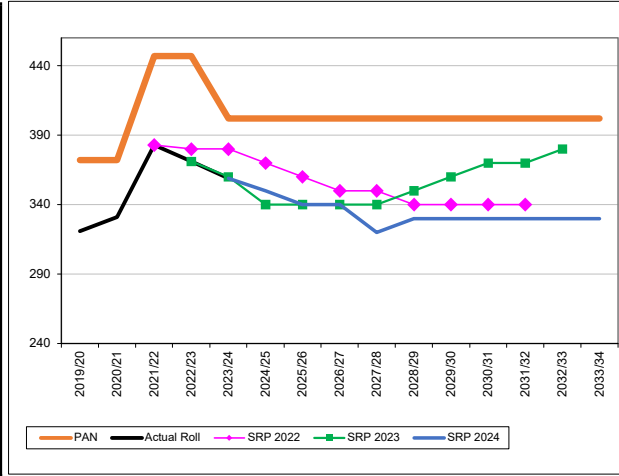
Forecasts SRP = GLA school roll forecasts should be treated with caution, estimates change/not actuals, therefore rounded nearest 10 to avoid misinterpretation.

Appendix B, Table 7C

2019/20 Temporary Capping Not Shown (-30): -30 Rhyll
 2019/20 Temporary Capping Not Shown (-30): -30 Carlton
 2021/22 CLOSURE Permanent Places (-60): -60 All years Carlton
 2022/23 Permanent Places (-15): -15 St Dominic's

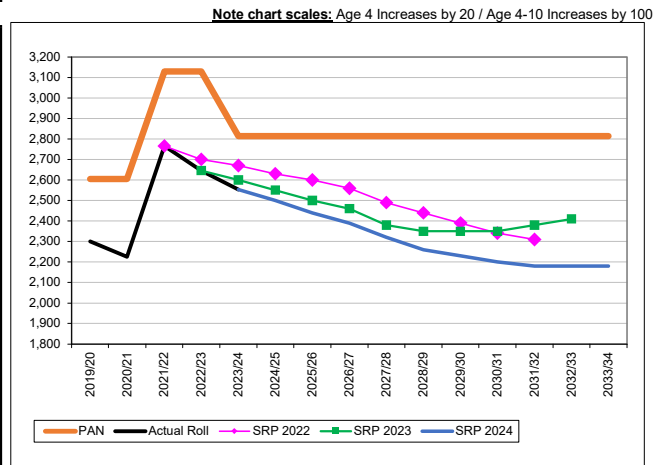
GLA Forecast: children aged 4 years old/reception

PA3	PAN	Actual Roll	SRP 2021	SRP 2022	SRP 2023	SRP 2024	No Surplus/Deficit	% Surplus/Deficit
							PAN	PAN
2015/16	371	364					7	1.9%
2016/17	372	328					44	11.8%
2017/18	372	324					48	12.9%
2018/19	372	329					43	11.6%
2019/20	372	321					51	13.7%
2020/21	372	331	331				41	11.0%
2021/22	447	383	330	383			64	14.3%
2022/23	447	371	320	380	371		76	17.0%
2023/24	402	359	320	380	360	359	43	10.7%
2024/25	402		300	370	340	350	52	13%
2025/26	402		300	360	340	340	62	15%
2026/27	402		290	350	340	340	62	15%
2027/28	402		290	350	340	320	82	20%
2028/29	402		290	340	350	330	72	18%
2029/30	402		280	340	360	330	72	18%
2030/31	402		280	340	370	330	72	18%
2031/32	402			340	370	330	72	18%
2032/33	402				380	330	72	18%
2033/34	402					330	72	125%



GLA Forecast: children aged 4 to 10 years old/reception to year 6

PA3	PAN	Actual Roll	SRP 2021	SRP 2022	SRP 2023	SRP 2024	No Surplus/Deficit	% Surplus/Deficit
							PAN	PAN
2015/16	2,391	2,270					121	5.1%
2016/17	2,424	2,283					141	5.8%
2017/18	2,484	2,280					204	8.2%
2018/19	2,544	2,312					232	9.1%
2019/20	2,604	2,301					303	11.6%
2020/21	2,604	2,225	2,225				379	14.6%
2021/22	3,129	2,766	2,180	2,766			363	11.6%
2022/23	3,129	2,646	2,150	2,700	2,646		483	15.4%
2023/24	2,814	2,553	2,160	2,670	2,600	2,553	261	9.3%
2024/25	2,814		2,140	2,630	2,550	2,500	314	11%
2025/26	2,814		2,150	2,600	2,500	2,440	374	13%
2026/27	2,814		2,130	2,560	2,460	2,390	424	15%
2027/28	2,814		2,090	2,490	2,380	2,320	494	18%
2028/29	2,814		2,040	2,440	2,350	2,260	554	20%
2029/30	2,814		2,000	2,390	2,350	2,230	584	21%
2030/31	2,814		1,950	2,340	2,350	2,200	614	22%
2031/32	2,814			2,310	2,380	2,180	634	23%
2032/33	2,814				2,410	2,180	634	23%
2033/34	2,814					2,180	634	23%



Note chart scales: Age 4 Increases by 20 / Age 4-10 Increases by 100

Camden Planning Areas 1-3 (North-Central) GLA School Roll Projections: Primary Age Forecasts

Appendix B, Table 7D

SRP = School Roll Projections received from GLA

PAN: (Planned Admission Number) based on September

Actual School Rolls: based on children attending national curriculum year group in January DfE School Census.

Forecasts SRP = GLA school roll forecasts should be treated with caution, estimates are likely to change and are not actuals, therefore are rounded to nearest 10 to avoid misinterpretation. Summed forecast totals for; **PA1-3 total** and **Borough total** are calculated from original numbers, before being rounded to nearest 10.

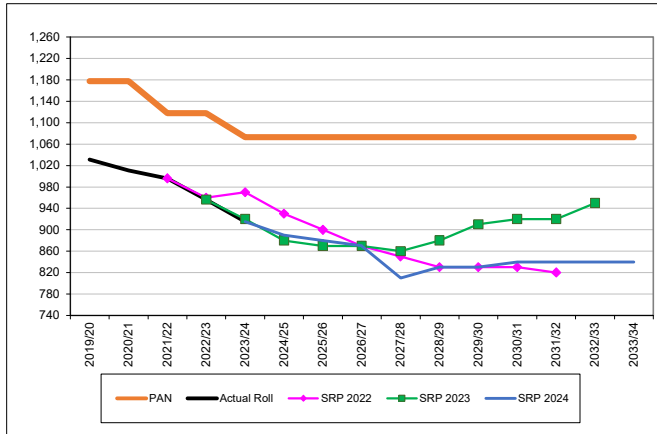
2019/20 Temporary Capping Not Shown (-60): -30 Carlton (PA2) & -30 Rhyl (PA3)

2021/22 CLOSURE Permanent Places (-60): -60 All years Carlton (PA3)

2022/23 Permanent Places (-15): -15 St Dominic's (PA3)

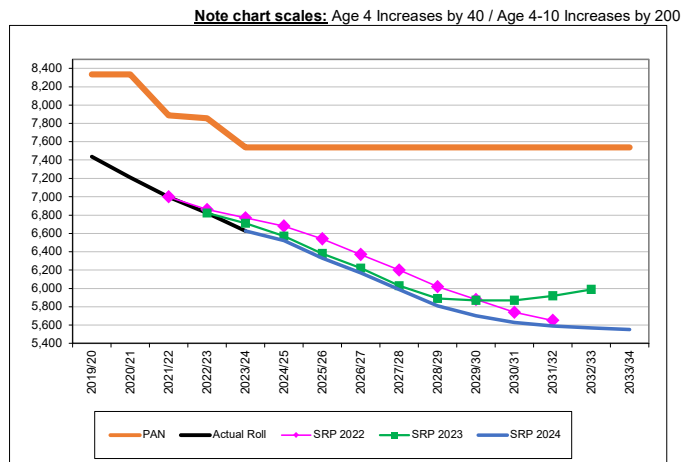
GLA Forecast: children aged 4 years old/reception

PA1,2,3	PAN	Actual Roll	SRP 2022	SRP 2023	SRP 2024	No. Surplus/Deficit		% Surplus/Deficit	
						PAN	PAN		
2015/16	1,206	1,166				40	3.3%		
2016/17	1,207	1,069				138	11.4%		
2017/18	1,178	1,051				127	10.8%		
2018/19	1,178	1,045				133	11.3%		
2019/20	1,178	1,031				147	12.5%		
2020/21	1,178	1,011				167	14.2%		
2021/22	1,118	996	996			122	10.9%		
2022/23	1,118	956	960	956		162	14.5%		
2023/24	1,073	915	970	920	915	158	14.7%		
2024/25	1,073		930	880	890	183	17%		
2025/26	1,073		900	870	880	193	18%		
2026/27	1,073		870	870	870	203	19%		
2027/28	1,073		850	860	810	263	25%		
2028/29	1,073		830	880	830	243	23%		
2029/30	1,073		830	910	830	243	23%		
2030/31	1,073		830	920	840	233	22%		
2031/32	1,073		820	920	840	233	22%		
2032/33	1,073			950	840	233	22%		
2033/34	1,073				840	233	22%		



GLA Forecast: children aged 4 to 10 years old/reception to year 6

PA1,2,3	PAN	Actual Roll	SRP 2022	SRP 2023	SRP 2024	No. Surplus/Deficit		% Surplus/Deficit	
						PAN	PAN		
2015/16	7,978	7,616				362	4.5%		
2016/17	8,099	7,657				442	5.5%		
2017/18	8,218	7,607				611	7.4%		
2018/19	8,307	7,551				756	9.1%		
2019/20	8,336	7,436				900	10.8%		
2020/21	8,335	7,211				1,124	13.5%		
2021/22	7,886	6,998	6,998			888	11.3%		
2022/23	7,855	6,821	6,860	6,821		1,034	13.2%		
2023/24	7,539	6,627	6,770	6,710	6,627	912	12.1%		
2024/25	7,539		6,680	6,570	6,520	1,019	14%		
2025/26	7,539		6,540	6,380	6,330	1,209	16%		
2026/27	7,539		6,370	6,220	6,170	1,369	18%		
2027/28	7,539		6,200	6,030	5,990	1,549	21%		
2028/29	7,539		6,020	5,890	5,810	1,729	23%		
2029/30	7,539		5,880	5,870	5,700	1,839	24%		
2030/31	7,539		5,740	5,870	5,630	1,909	25%		
2031/32	7,539		5,650	5,920	5,590	1,949	26%		
2032/33	7,539			5,990	5,570	1,969	26%		
2033/34	7,539				5,550	1,989	26%		



Note chart scales: Age 4 Increases by 40 / Age 4-10 Increases by 200

Camden Planning Area 4 (South) GLA School Roll Projections: Primary Age Forecasts

SRP = School Roll Projections received from GLA

Actuals = PAN: (Planned Admission Number) based on September.

Actual School Rolls: based on children attending by national curriculum year group from the January DfE School Census.

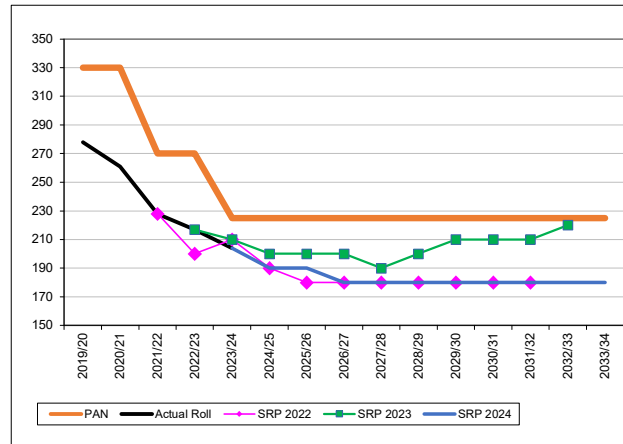
Forecasts SRP = GLA school roll forecasts should be treated with caution, estimates change/not actuals, therefore rounded nearest 10 to avoid misinterpretation.

Appendix B, Table 7E

2019/20 CLOSURE Permanent Places (-60): -60 All years St Aloysius
 2022/23 CLOSURE Permanent Places (-30): -30 All years St Michael's
 2022/23 Permanent Places (-15): -15 Netley

GLA Forecast: children aged 4 years old/reception

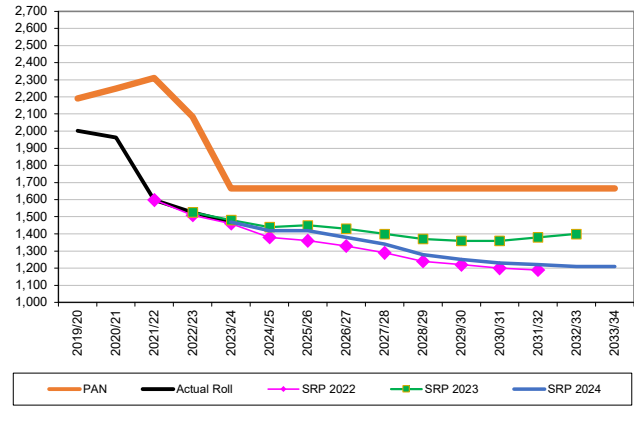
PA4	PAN	Actual Roll	SRP 2022	SRP 2023	SRP 2024	No. Surplus/Deficit		% Surplus/Deficit	
						PAN	PAN	PAN	PAN
2015/16	390	372				18	4.6%		
2016/17	390	347				43	11.0%		
2017/18	390	319				71	18.2%		
2018/19	390	266				124	31.8%		
2019/20	330	278				52	15.8%		
2020/21	330	261				69	20.9%		
2021/22	270	228	228			42	15.6%		
2022/23	270	217	200	217		53	19.6%		
2023/24	225	204	210	210	204	21	9.3%		
2024/25	225		190	200	190	35	16%		
2025/26	225		180	200	190	35	16%		
2026/27	225		180	200	180	45	20%		
2027/28	225		180	190	180	45	20%		
2028/29	225		180	200	180	45	20%		
2029/30	225		180	210	180	45	20%		
2030/31	225		180	210	180	45	20%		
2031/32	225		180	210	180	45	20%		
2032/33	225			220	180	45	20%		
2033/34	225				180	45	20%		



GLA Forecast: children aged 4 to 10 years old/reception to year 6

PA4	PAN	Actual Roll	SRP 2022	SRP 2023	SRP 2024	No. Surplus/Deficit		% Surplus/Deficit	
						PAN	PAN	PAN	PAN
2015/16	2,370	2,262				108	4.6%		
2016/17	2,430	2,259				171	7.0%		
2017/18	2,490	2,211				279	11.2%		
2018/19	2,550	2,129				421	16.5%		
2019/20	2,190	2,002				188	8.6%		
2020/21	2,250	1,963				287	12.8%		
2021/22	2,310	1,598	1,598			712	30.8%		
2022/23	2,085	1,526	1,510	1,526		559	26.8%		
2023/24	1,665	1,470	1,460	1,480	1,470	195	11.7%		
2024/25	1,665		1,380	1,440	1,420	245	15%		
2025/26	1,665		1,360	1,450	1,420	245	15%		
2026/27	1,665		1,330	1,430	1,380	285	17%		
2027/28	1,665		1,290	1,400	1,340	325	20%		
2028/29	1,665		1,240	1,370	1,280	385	23%		
2029/30	1,665		1,220	1,360	1,250	415	25%		
2030/31	1,665		1,200	1,360	1,230	435	26%		
2031/32	1,665		1,190	1,380	1,220	445	27%		
2032/33	1,665			1,400	1,210	455	27%		
2033/34	1,665				1,210	455	27%		

Note chart scales: Age 4 Increases by 20 / Age 4-10 Increases by 100



Camden Planning Area 5 (South of Euston Road) GLA School Roll Projections: Primary Age Forecasts

Appendix B, Table 7F

2022/23 Permanent Places (-15) Argyle

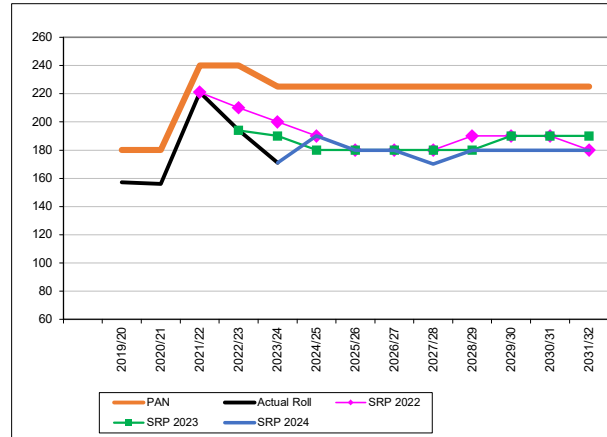
SRP = School Roll Projections from GLA

PAN: (Planned Admission Number) based on September.
Actual School Rolls: based on children attending by national curriculum year group from the January DfE School Census.

Forecasts SRP = GLA school roll forecasts should be treated with caution, estimates change/not actuals, therefore rounded nearest 10 to avoid misinterpretation.

GLA Forecast: children aged 4 years old/reception

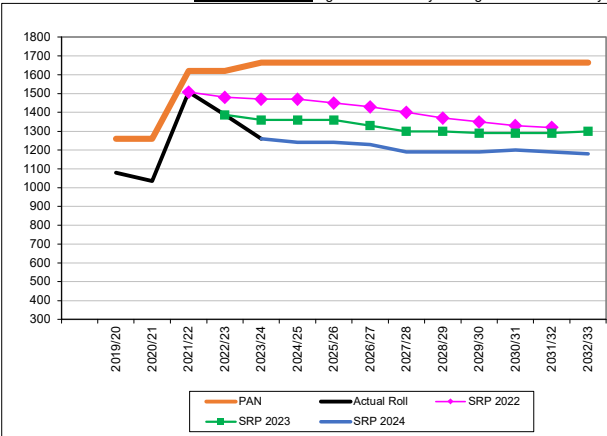
PA5	PAN	Actual Roll	SRP 2022	SRP 2023	SRP 2024	No. Surplus/Deficit		% Surplus/Deficit	
						PAN	PAN	PAN	PAN
2015/16	180	176				4		2.2%	
2016/17	180	179				1		0.6%	
2017/18	180	163				17		9.4%	
2018/19	180	145				35		19.4%	
2019/20	180	157				23		12.8%	
2020/21	180	156				24		13.3%	
2021/22	240	221	221			19		7.9%	
2022/23	240	194		194		46		19.2%	
2023/24	225	171	200	190	171	54		24.0%	
2024/25	225		190	180	190	35		16%	
2025/26	225		180	180	180	45		20%	
2026/27	225		180	180	180	45		20%	
2027/28	225		180	180	170	55		24%	
2028/29	225		190	180	180	45		20%	
2029/30	225		190	190	180	45		20%	
2030/31	225		190	190	180	45		20%	
2031/32	225		180	190	180	45		20%	
2032/33	225			190	180	45		20%	
2033/34	225				180	45		20%	



GLA Forecast: children aged 4 to 10 years old/reception to year 6

PA5	PAN	Actual Roll	SRP 2022	SRP 2023	SRP 2024	No. Surplus/Deficit		% Surplus/Deficit	
						PAN	PAN	PAN	PAN
2015/16	1,260	1,188				72		5.7%	
2016/17	1,260	1,163				97		7.7%	
2017/18	1,260	1,114				146		11.6%	
2018/19	1,260	1,077				183		14.5%	
2019/20	1,260	1,080				180		14.3%	
2020/21	1,260	1,036				224		17.8%	
2021/22	1,620	1,508	1,508			112		6.9%	
2022/23	1,620	1,387	1,480	1,387		233		14.4%	
2023/24	1,665	1,259	1,470	1,360	1,259	406		24.4%	
2024/25	1,665		1,470	1,360	1,240	425		26%	
2025/26	1,665		1,450	1,360	1,240	425		26%	
2026/27	1,665		1,430	1,330	1,230	435		26%	
2027/28	1,665		1,400	1,300	1,190	475		29%	
2028/29	1,665		1,370	1,300	1,190	475		29%	
2029/30	1,665		1,350	1,290	1,190	475		29%	
2030/31	1,665		1,330	1,290	1,200	465		28%	
2031/32	1,665		1,320	1,290	1,190	475		29%	
2032/33	1,665			1,300	1,180	485		29%	
2032/34	1,665				1,180	485		29%	

Note chart scales: Age 4 Increases by 20 / Age 4-10 Increases by 100



Camden Borough GLA School Roll Projections: Primary Age Forecasts

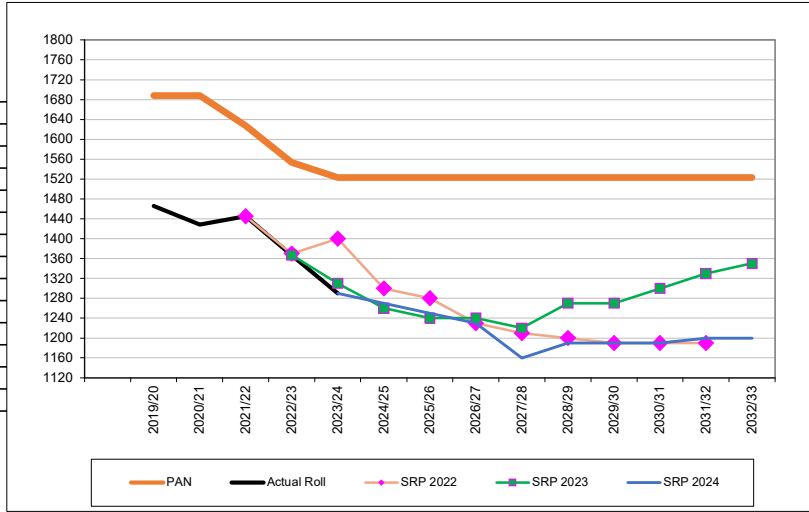
SRP = School Roll Projections received from GLA

Actuals = PAN: (Planned Admission Number) based on September.
Actual School Rolls: based on children attending national curriculum year group in January DfE School Census.

Forecasts SRP = GLA school roll forecasts should be treated with caution, estimates are likely to change and are not actuals, therefore are rounded to nearest 10 to avoid misinterpretation.

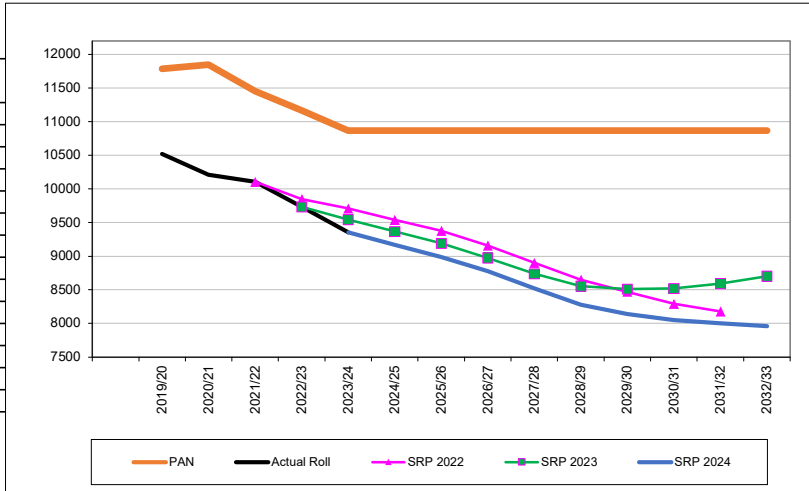
GLA Forecast: children aged 4 years old/reception

Borough	PAN	Actual Roll	SRP 2021	SRP 2022	SRP 2023	SRP 2024	No. Surplus/Deficit	% Surplus/Deficit
							PAN	PAN
2015/16	1,776	1,714					62	3.5%
2016/17	1,777	1,595					182	10.2%
2017/18	1,748	1,534					214	12.2%
2018/19	1,748	1,456					292	16.7%
2019/20	1,688	1,466					222	13.2%
2020/21	1,688	1,428	1,428				260	15.4%
2021/22	1,628	1,445	1,368	1,445			183	11.2%
2022/23	1,553	1,367	1,357	1,370	1,367		186	12.0%
2023/24	1,523	1,290	1,337	1,400	1,310	1,290	233	15.3%
2024/25	1,523		1,277	1,300	1,260	1,270	253	17%
2025/26	1,523		1,256	1,280	1,240	1,250	273	18%
2026/27	1,523		1,241	1,230	1,240	1,230	293	19%
2027/28	1,523		1,218	1,210	1,220	1,160	363	24%
2028/29	1,523		1,197	1,200	1,270	1,190	333	22%
2029/30	1,523		1,177	1,190	1,270	1,190	333	22%
2030/31	1,523		1,159	1,190	1,300	1,190	333	22%
2031/32	1,523			1,190	1,330	1,200	323	21%
2032/33	1,523				1,350	1,200	323	21%
2033/34	1,523					1,200	323	21%



GLA Forecast: children aged 4 to 10 years old/reception to year 6

Borough	PAN	Actual Roll	SRP 2021	SRP 2022	SRP 2023	SRP 2024	No. Surplus/Deficit	% Surplus/Deficit
							PAN	PAN
2015/16	11,608	11,066					542	4.7%
2016/17	11,789	11,079					710	6.0%
2017/18	11,968	10,932					1,036	8.7%
2018/19	12,117	10,757					1,360	11.2%
2019/20	11,786	10,518					1,268	10.8%
2020/21	11,845	10,212	10,212				1,633	13.8%
2021/22	11,454	10,105	9,829	10,105			1,349	11.8%
2022/23	11,170	9,734	9,603	9,850	9,734		1,436	12.9%
2023/24	10,869	9,356	9,439	9,710	9,545	9,356	1,513	13.9%
2024/25	10,869		9,277	9,540	9,367	9,170	1,699	16%
2025/26	10,869		9,149	9,380	9,191	8,990	1,879	17%
2026/27	10,869		8,966	9,160	8,975	8,780	2,089	19%
2027/28	10,869		8,776	8,900	8,739	8,520	2,349	22%
2028/29	10,869		8,577	8,650	8,554	8,280	2,589	24%
2029/30	10,869		8,377	8,470	8,511	8,140	2,729	25%
2030/31	10,869		8,196	8,290	8,518	8,050	2,819	26%
2031/32	10,869			8,180	8,594	8,000	2,869	26%
2032/33	10,869				8,702	7,960	2,909	27%
2033/34	10,869					7,930	2,939	27%



Appendix B, Table 7G

2019/20 CLOSURE Permanent Places (-60): -60 All year groups St Aloysius (PA4)
2019/20 Temporary Capping Not Shown (-60): -30 Carlton (PA2) & -30 Rhyl (PA3)
2021/22 CLOSURE Permanent Places (-60): -60 All years Carlton (PA2)
2022/23 CLOSURE Permanent Places (-30): -30 All years St Michael's (PA4)
2022/23 Permanent Places (-45): -15 St Dominic's (PA2) & -15 Netley (PA4) & -15 Argyle (PA5)