

Consultation Postcard

Safe and Healthy Streets Consultation

Amendments to the Arlington Road Area Scheme



Consulting with you

We are proposing to make changes to the Arlington Road Area Low Traffic Neighbourhood Scheme to improve road safety for people walking and cycling and to balance the demand for resident and visitor parking spaces.

Following resident and stakeholder feedback we are proposing to make traffic amendments to the following locations so that the Arlington Road Area Low Traffic Neighbourhood can work better for local people:

- Inverness Street: a new scheme to prohibit access to Arlington Road from Inverness Street for general motor vehicle traffic.
- Mornington Place junction with Mornington Crescent: removing the existing measure and replacing it with a motor vehicle access restriction at the junction of Mornington Place with Clarkson Row/Mornington Terrace.

We also propose to make parking amendments on Mornington Place, Arlington Road, Albert Street and Mornington Street.

Share your views

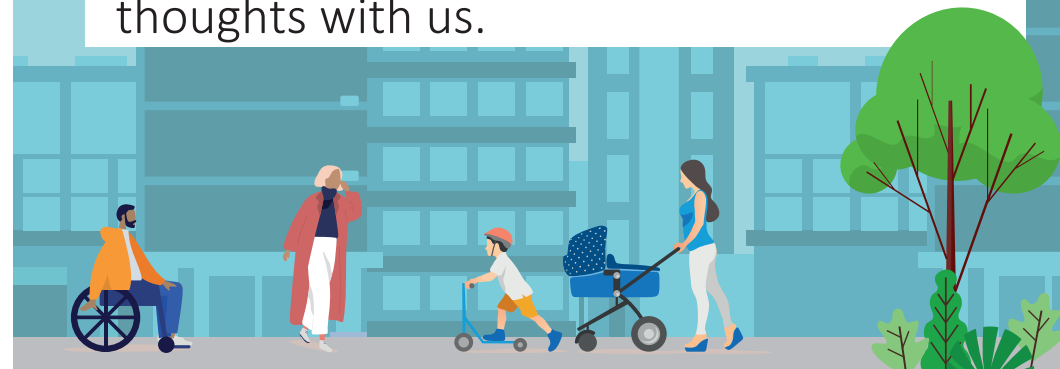
To find out more and share your views on these proposed changes, visit our website to answer a few quick questions.

[www.camden.gov.uk/
ArlingtonRoadAreaConsultation](http://www.camden.gov.uk/ArlingtonRoadAreaConsultation)

The consultation will be open until the **21st December 2020**. You can use this QR code to access the site from your phone.



If you'd prefer to fill out a paper form just get in touch with us on 020 7974 4444 and we'll pop one in the post for you. Thank you for sharing your thoughts with us.



Consultation Street notice



Safe and Healthy Streets consultation

Amendments to Arlington Road Area Low Traffic Neighbourhood Scheme

What's the challenge?

The Covid-19 pandemic has changed how communities in Camden live, travel and work. We want our streets to have more space for everyone to walk and cycle, for you to be breathing cleaner air, for children to get to and from school safely and for businesses to be able to flourish. Whether it's an essential journey like taking your children to school, getting to work or just popping out to enjoy your local park we want you to love where you live, and to love Camden.

What is being proposed?

We are proposing to amend the changes that we have recently made to the streets west of Camden High Street, from Mornington Crescent to Camden Town. This is in response to feedback received via email, on our online Commonplace website and via direct contact with residents, so that the Arlington Road Area Low Traffic Neighbourhood can work better for local people.

We are proposing to make the following amendments:

- Add a new scheme to Inverness Street. This scheme will prohibit access to Arlington Road from Inverness Street for general motor vehicle traffic.
- Remove the existing measure on Mornington Place at the junction with Mornington Crescent and replace it with a motor vehicle access restriction at the junction of Mornington Place with Clarkson Row/Mornington Terrace.
- Reinstate 2 resident parking spaces on Mornington Place and convert 3 existing Paid For parking spaces to Shared parking spaces, so that both permit holders in the CPZ zone and those seeking to use Paid For parking bays can use these spaces to park. 1 Shared use parking space is proposed to be added on Mornington Place.
- Make parking amendments to Arlington Road, Albert Street and Mornington Street to balance the demand for residents parking spaces with Paid For spaces for visitors of the area.

How can you give your views?

To find out more and share your views, visit our dedicated website to answer a few quick questions. You can use the QR code to access the site from your phone, or visit:

www.camden.gov.uk/ArlingtonRoadAreaConsultation



The consultation finishes on **Monday 21st December 2020**

If you'd prefer to fill out a paper form just get in touch with us on 020 7974 4444 and we'll pop one in the post for you. Thank you for sharing your thoughts with us.